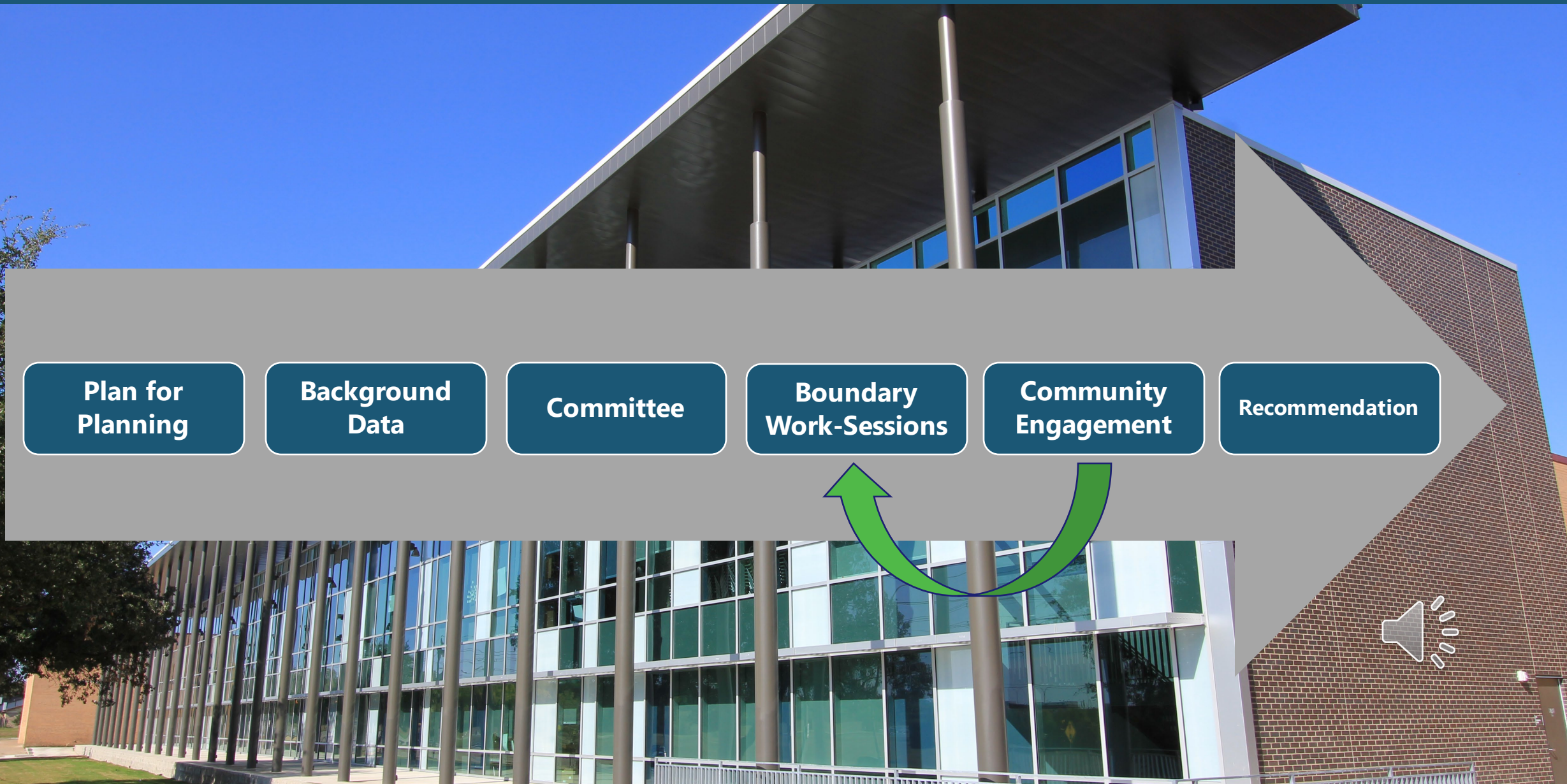




Phase 1 Boundary Options- Update

Columbia Public Schools | April, 2024

Attendance Area Planning Process



Boundary Phases & Remaining Process Timeline

Phase 1: 2024-25

Fill new Russell Boulevard Elementary addition

Phase 2: 2025-26

Fill new Battle Elementary addition
Balance middle & high school enrollments
Balance elementary enrollments that will not be
impacted by new Southwest Elementary

Phase 3: 2026-27

Fill new Southwest Elementary School
Balance enrollment at remaining schools impacted
by Southwest Elementary

- **April 1:** Russell Boulevard Elementary Options Open House (Phase 1)
 - Online survey open from **April 1** to **April 10**
- **April 8:** Phase 1 updates to Board
- **April 16 or 17:** Phase 1 approval
- **May 7-9:** Phases 2 & 3 Options Open Houses
 - Multiple meetings each day
 - Online survey open from **April 29** to **May 10**
- **May 13:** Board Update, Phase 2 & 3
 - Phase 1 approval (possibly)
- **June 10:** Board Update, present final options & feedback
- **July 8:** Board Vote on Phases 2 & 3

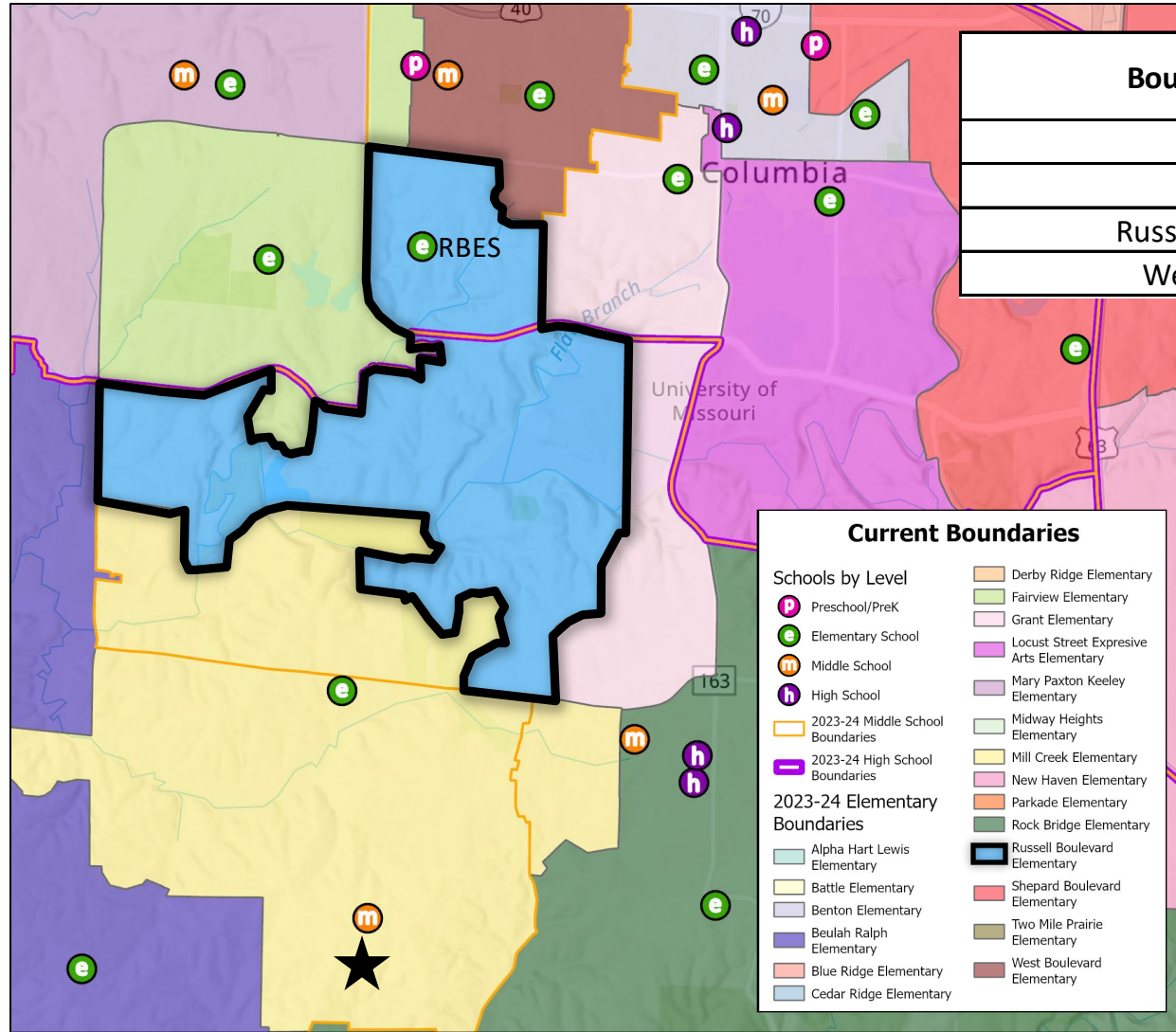


A group of five diverse school children are running happily across a grassy field. From left to right: a boy in a grey shirt and blue jeans, a boy in a white polo shirt and blue jeans, a girl in a pink shirt and blue shorts, a boy in a blue shirt and blue jeans, and a girl in a pink shirt and blue jeans. All children are wearing backpacks. In the background, there is a yellow school building with white-framed windows and some trees. The text "PHASE 1 BACKGROUND DATA" is overlaid in the center in a large, white, sans-serif font.

PHASE 1 BACKGROUND DATA

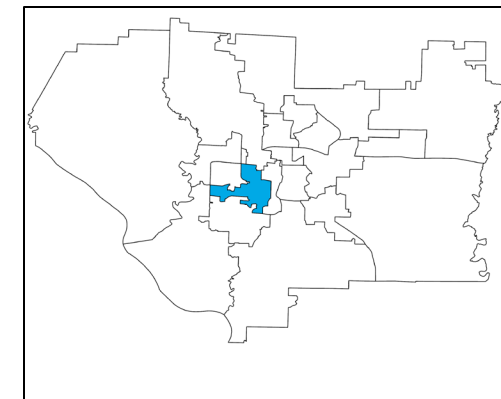


Current State



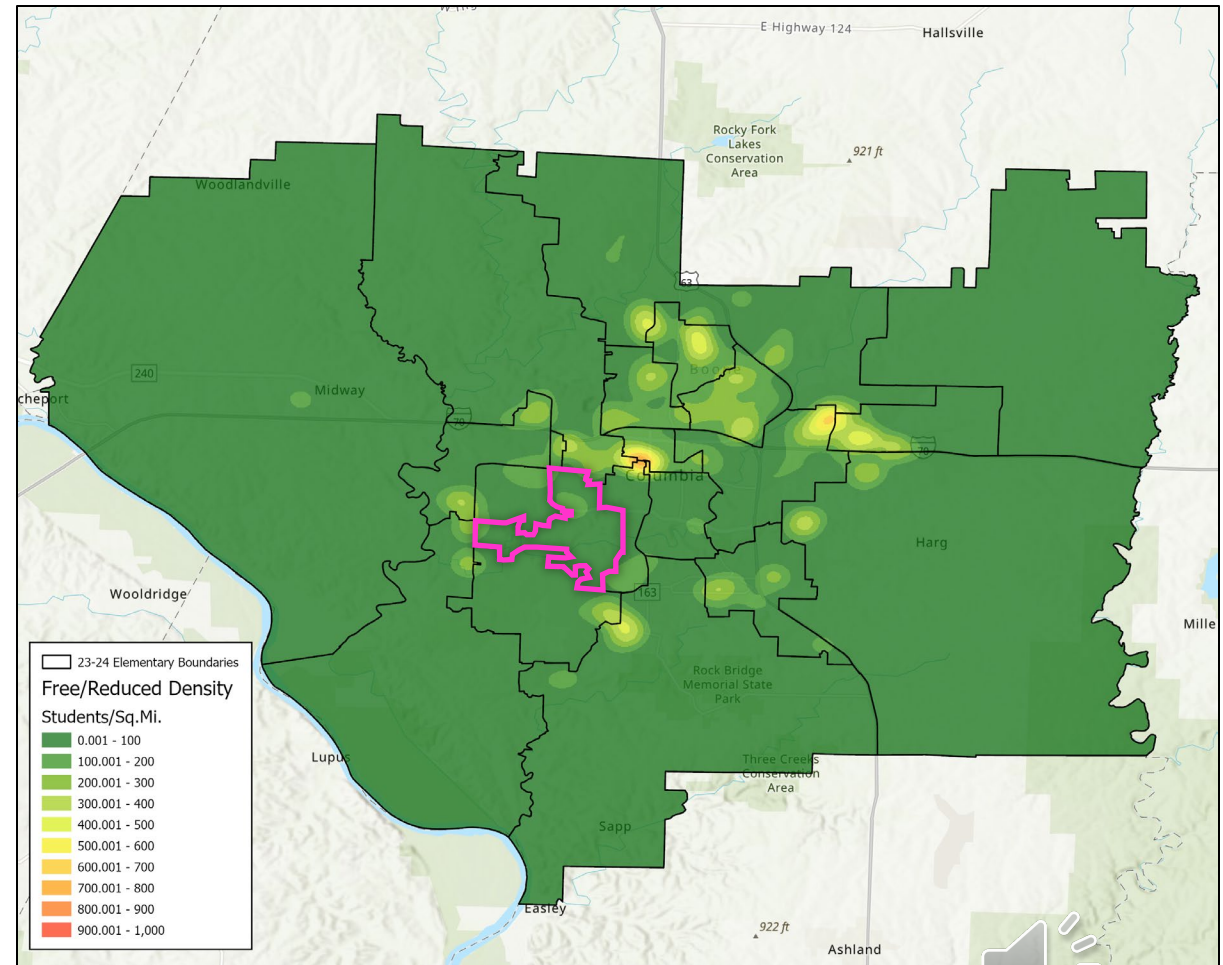
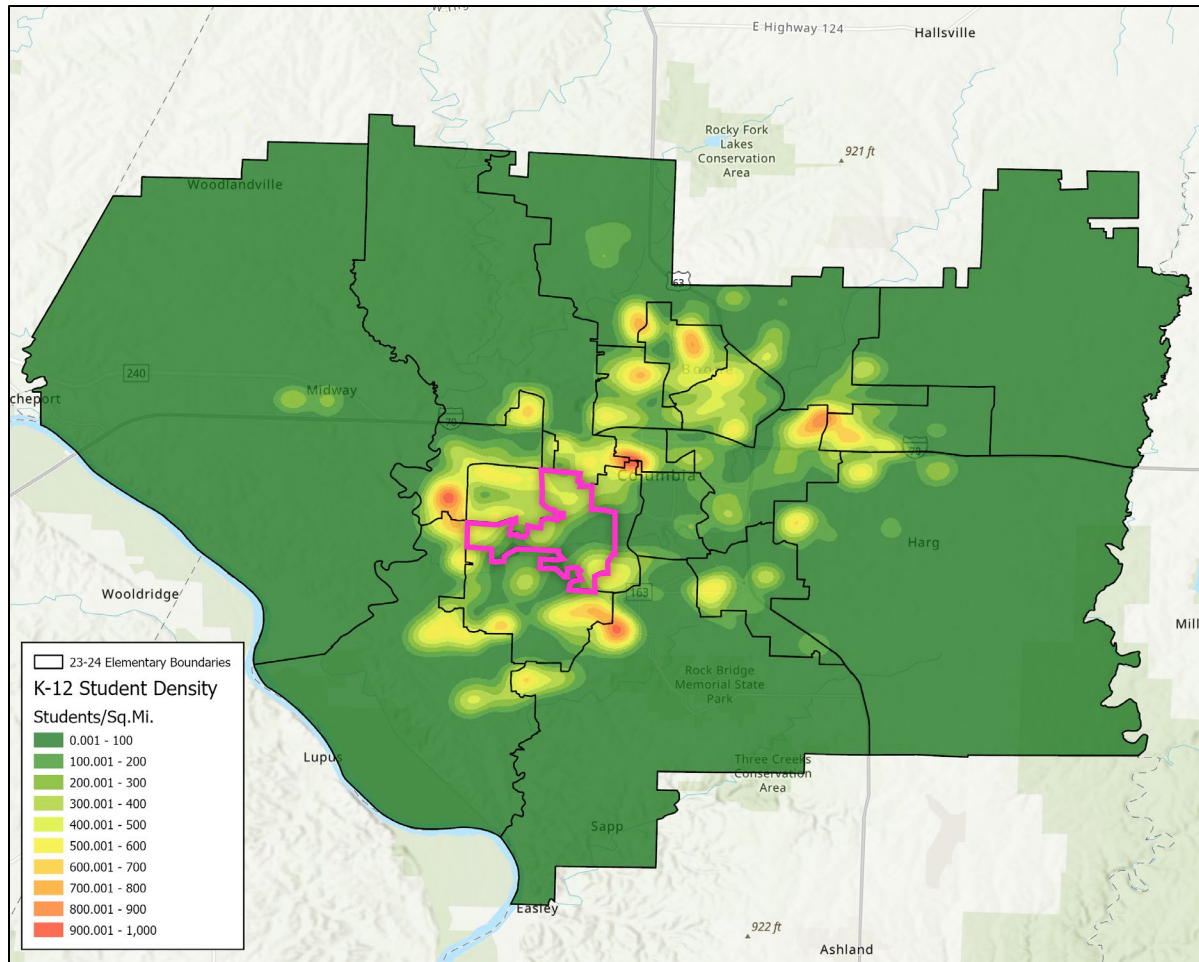
Boundary	24-25 Capacity	K-12 Live-In Enrollment	Live-In Utilization	Diversity Index	Low SES %	EL %	IEP %
Fairview ES	550	471	86%	1.39	26%	7%	10%
Grant ES	375	335	89%	1.75	36%	10%	8%
Russell Boulevard ES	650	486	75%	1.14	17%	4%	4%
West Boulevard ES	438	330	75%	2.29	55%	10%	12%

Elementary to Middle Feeders	Gentry	Jefferson	John Warner	Lange	Oakland	Smithton	West
Fairview ES	1%					89%	10%
Grant ES	47%	53%					
Russell Boulevard ES	66%						34%
West Boulevard ES							100%



Student Density

ALL STUDENTS



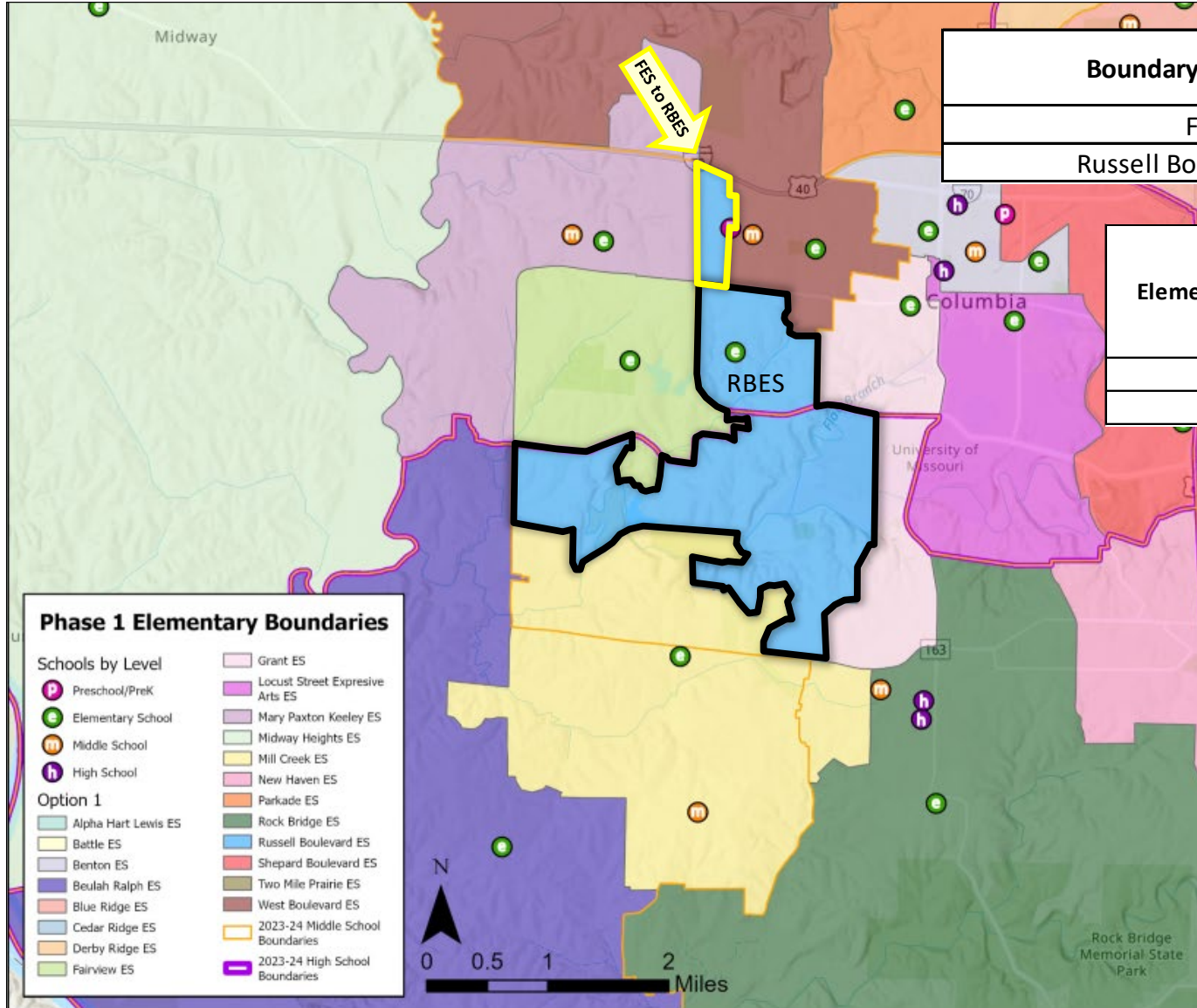
SOCIOECONOMICALLY DISADVANTAGED STUDENTS

A group of five diverse school children are running happily across a grassy field. From left to right: a boy in a grey shirt and blue jeans, a boy in a white polo shirt and blue jeans, a girl in a pink shirt and blue shorts, a boy in a blue shirt and blue jeans, and a girl in a pink shirt and blue jeans. All are wearing backpacks. In the background is a yellow school building with white-framed windows. The text "PHASE 1 BOUNDARY OPTIONS" is overlaid in the center in white capital letters.

PHASE 1 BOUNDARY OPTIONS



Option 1



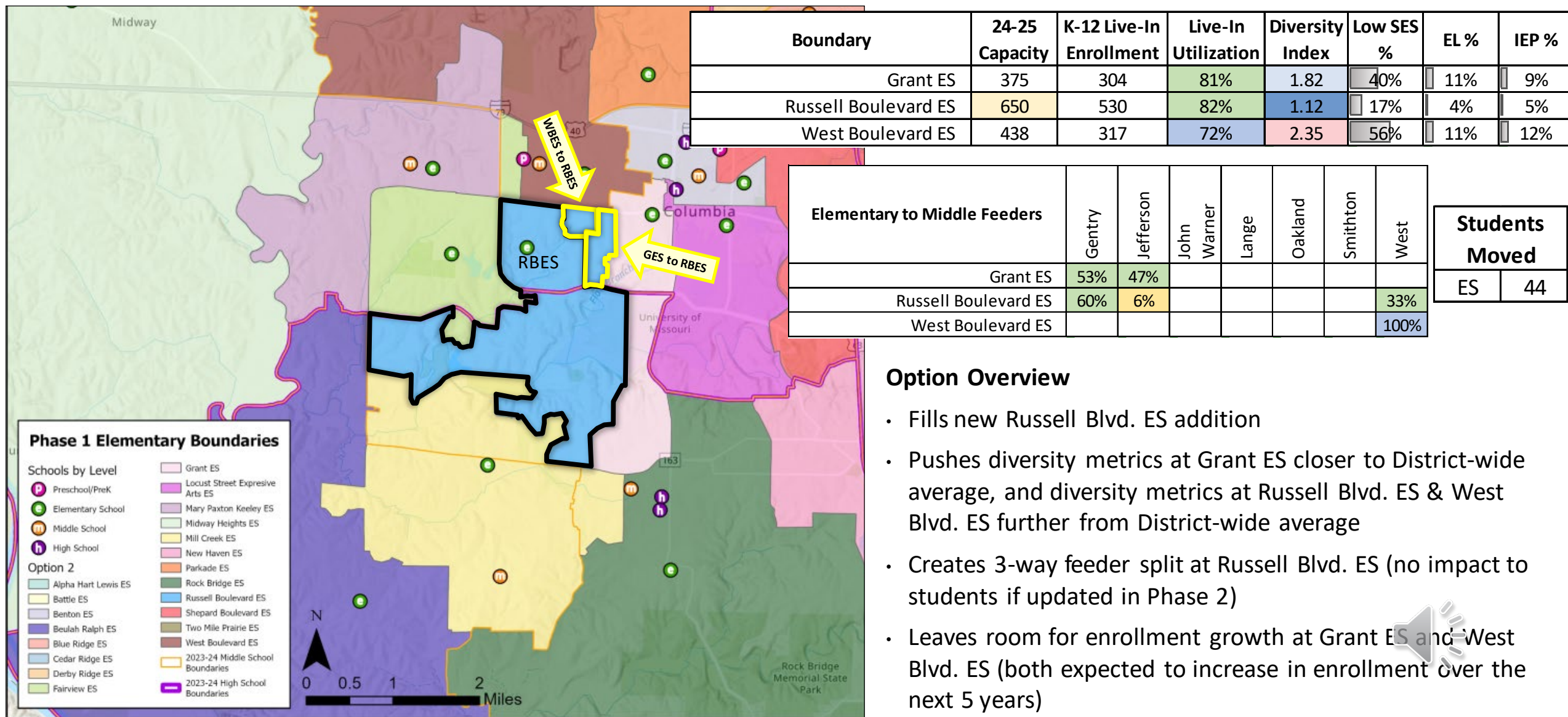
Boundary	24-25 Capacity	K-12 Live-In Enrollment	Live-In Utilization	Diversity Index	Low SES %	EL %	IEP %
Fairview ES	550	412	75%	1.16	19%	5%	9%
Russell Boulevard ES	650	545	84%	1.34	23%	6%	6%

Elementary to Middle Feeders	Gentry	Jefferson	John Warner	Lange	Oakland	Smithton	West	Students Moved	
Fairview ES	2%					98%		ES	59
Russell Boulevard ES	61%						39%		

Option Overview

- Fills new Russell Blvd. ES addition
- Pushes diversity metrics at Russell Blvd. ES closer to District-wide average, and diversity metrics at Fairview ES further from District-wide average
- Removes 3-way feeder split at Fairview Elementary
- Improves Russell Blvd. ES feeder split
- Leaves room for enrollment growth at Fairview (expected to increase in enrollment over the next 5 years)

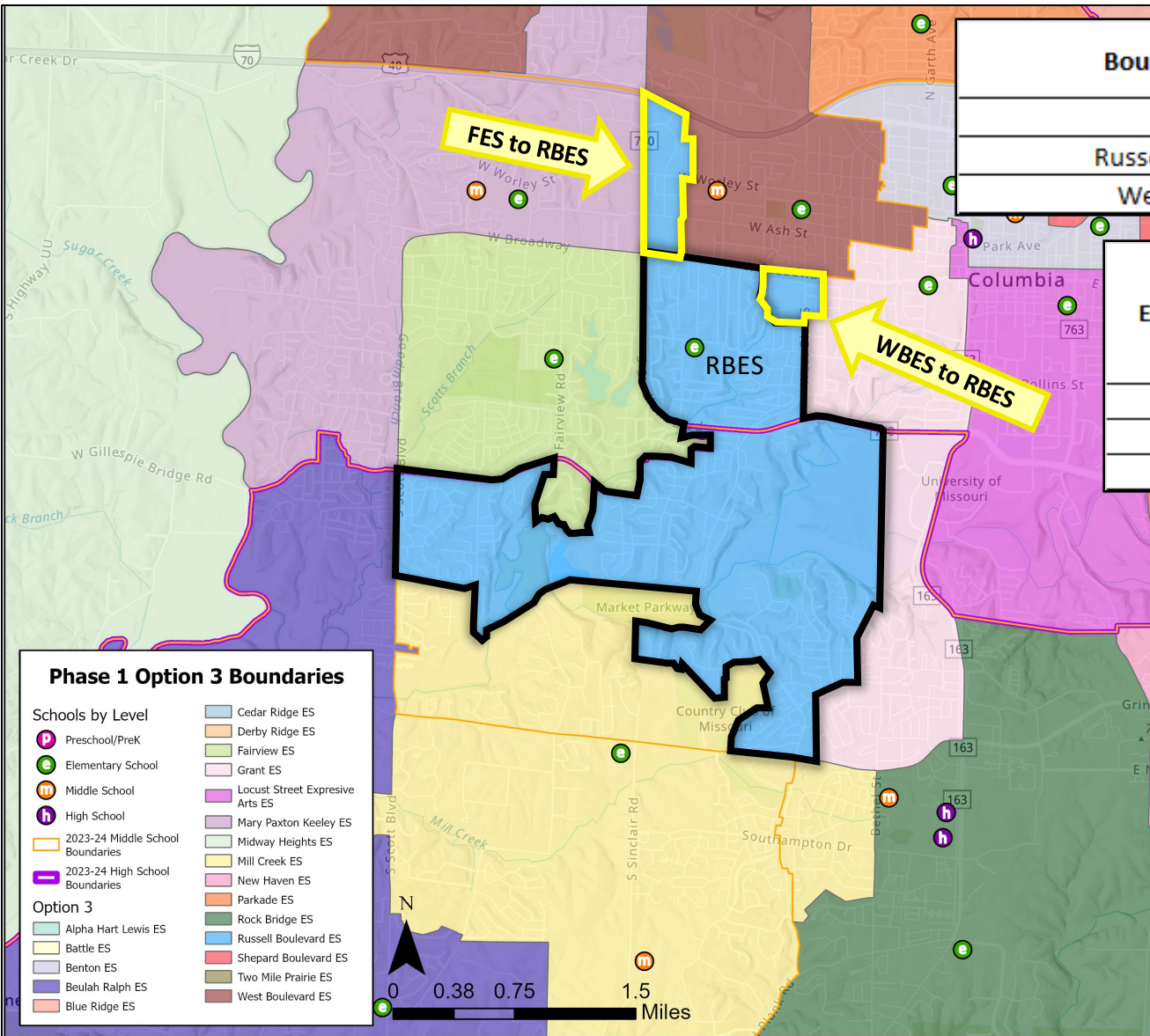
Option 2



Option Overview

- Fills new Russell Blvd. ES addition
- Pushes diversity metrics at Grant ES closer to District-wide average, and diversity metrics at Russell Blvd. ES & West Blvd. ES further from District-wide average
- Creates 3-way feeder split at Russell Blvd. ES (no impact to students if updated in Phase 2)
- Leaves room for enrollment growth at Grant ES and West Blvd. ES (both expected to increase in enrollment over the next 5 years)

NEW: Option 3



Boundary	24-25 Capacity	K-12 Live-In Enrollment	Live-In Utilization	Diversity Index	Low SES %	EL %	IEP %
Fairview ES	550	412	75%	1.16	19%	5%	9%
Russell Boulevard ES	650	558	86%	1.33	24%	6%	6%
West Boulevard ES	438	317	72%	2.35	56%	11%	12%

Elementary to Middle Feeders	Gentry	Jefferson	John Warner	Lange	Oakland	Smithton	West	Students Moved	
Fairview ES	2%					98%		ES	72
Russell Boulevard ES	59%						41%		
West Boulevard ES							100%		

Option Overview

- Combination of Option 1 & 2
- Fills new Russell Blvd. ES addition
- Pushes diversity metrics at Russell Blvd. ES closer to District-wide average, and diversity metrics at Fairview ES & West Blvd. ES further from District-wide average
- Removes 3-way feeder split at Fairview ES
- Improves Russell Blvd. ES feeder split
- Leaves room for enrollment growth at Fairview & West Blvd. (expected to increase in enrollment over the next 5 years)



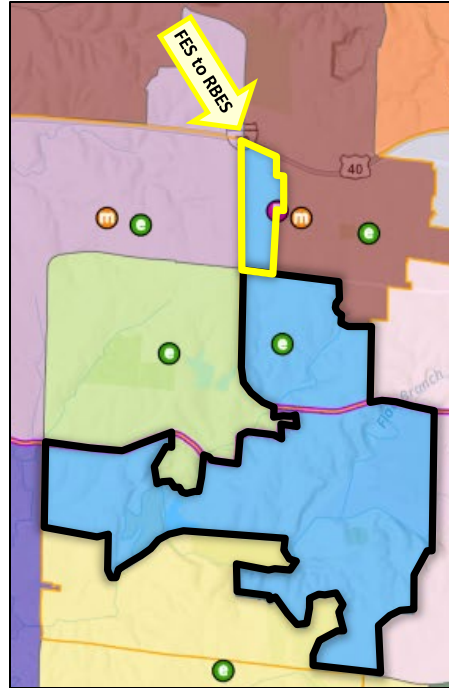
Next Steps: Providing Feedback

**Online Survey will be open
until April 10th**

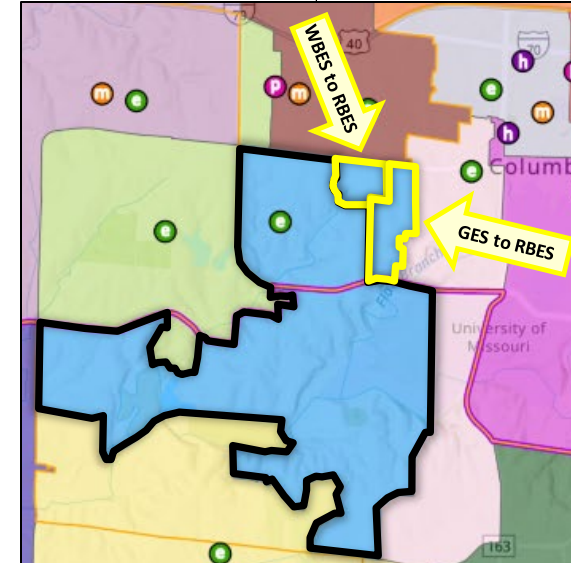
Please consider providing your feedback,
even if you are not impacted.

Feedback will be compiled into a report
and used to inform the Phase 1
boundary recommendation. Changes to
either option could be made based on
community feedback.

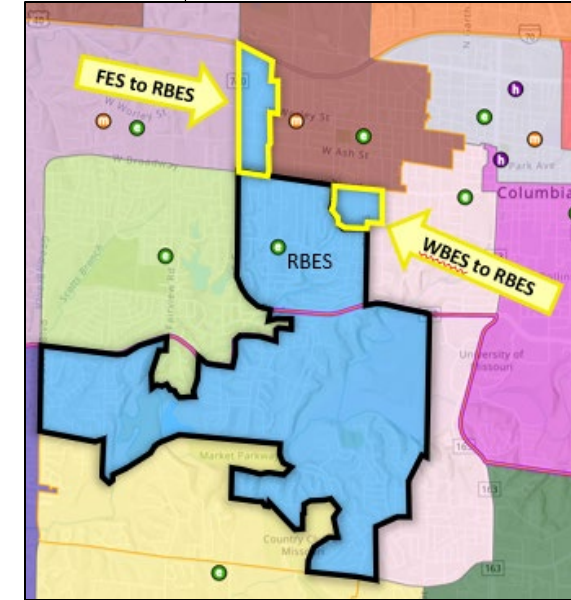
Option 1



Option 2



New Option 3



**Use this QR code if you have
yet to take a Phase 1 survey**



**Use this QR code if you have already
responded to Options 1 & 2**



Thank You!

