



## Demographics & GIS Mapping (Attendance Area Planning)

Columbia Public Schools | December 11, 2023

# Cooperative Strategies

2,000+  
Municipalities  
Served

15+ Billion  
Dollars in Bonds

15+  
Service  
Lines



320+  
Facilities Master  
Plans



250 Million  
Dollars in Owner's  
Rep.

250+ Million Sq.  
Ft. of Schools  
Assessed

3,200+  
Enrollment  
Projections

27+ Years of  
Experience



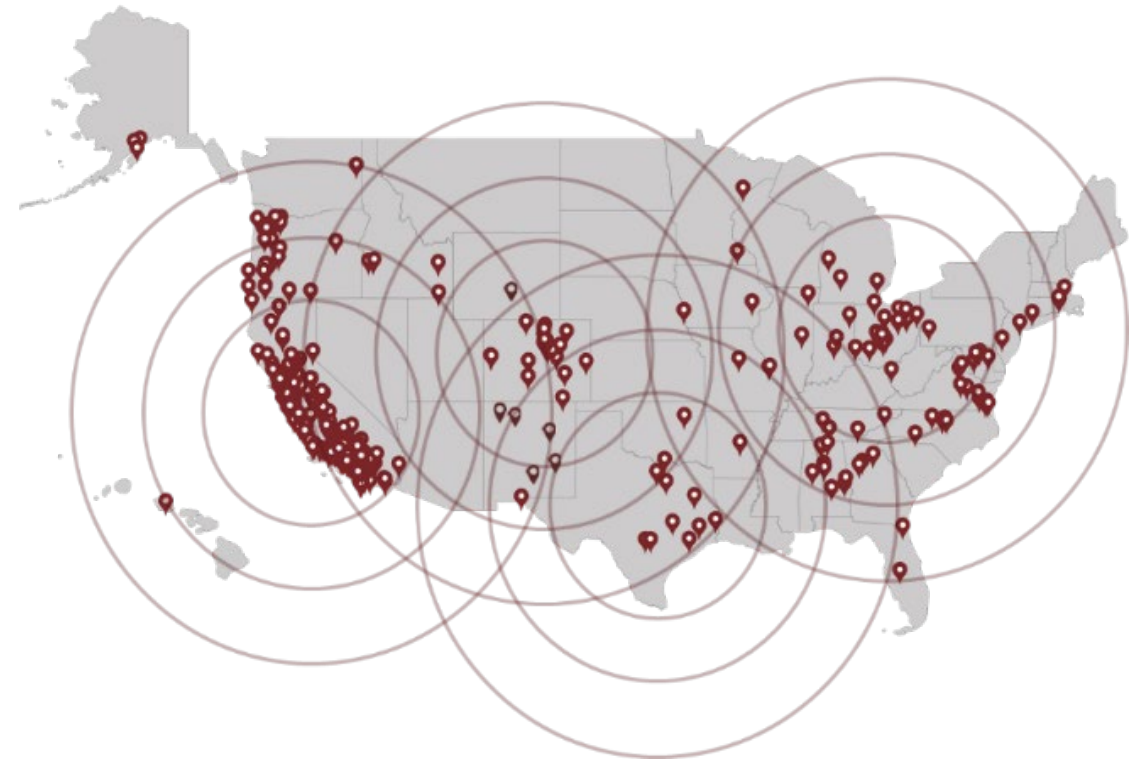
Student  
Potential &  
Housing  
Development  
Studies



280+ Educational  
Specifications

SaaS  
Offerings  
Including  
My Facility  
Informer™

3 U.S. Office  
Locations





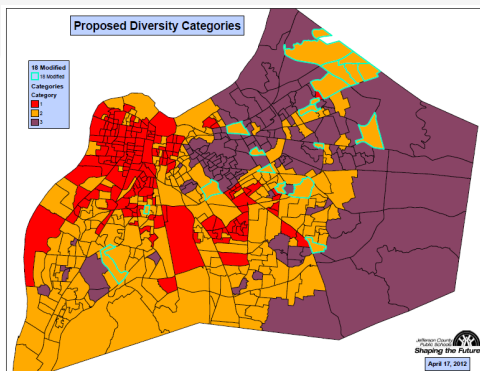
# Attendance Area Planning Process



# Attendance Area Planning Process

## Plan for Planning

- **Confirm process and timeline**
- **Discuss other comparable processes**
- **Define expectations**
- **Discuss any additional goals for this process**
  - **Diversity index/factors**



Household Income

Racial Breakdown

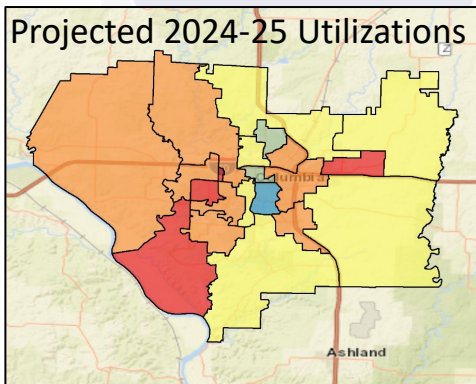
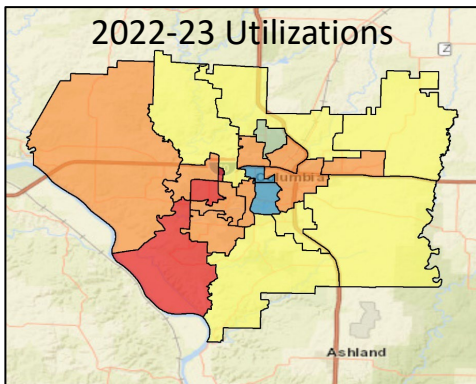
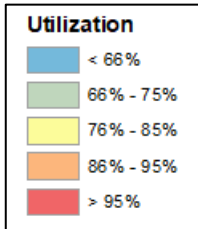
Level of Adult  
Educational  
Attainment

### CPS Guiding Principles

- The attendance area committee considers this work as part of the District plan. It's one part of a whole.
- The attendance area reflects the composition of the Columbia Public School community.
- The committee recognizes the power of schools to create community.
  - Accessibility for families is essential (volunteering and attending school functions are easier when the school is near)
- The attendance area can anticipate future growth of the neighborhood.
- Consider time students spend on a bus and distance traveled to and from school.
- Consider attendance area lines that follow natural/manmade boundaries.
- Consider a transfer policy that allows 8th and 12th graders to remain at their previous school and policies that allow siblings to remain (8th and 12th grade transportation to be provided by the District).

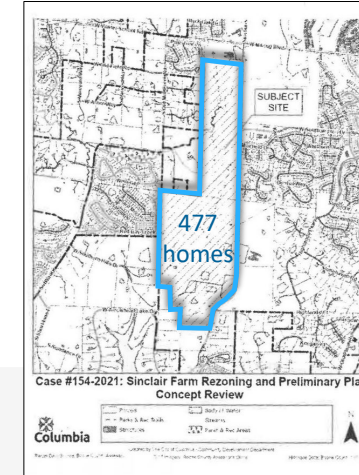


# Attendance Area Planning Process

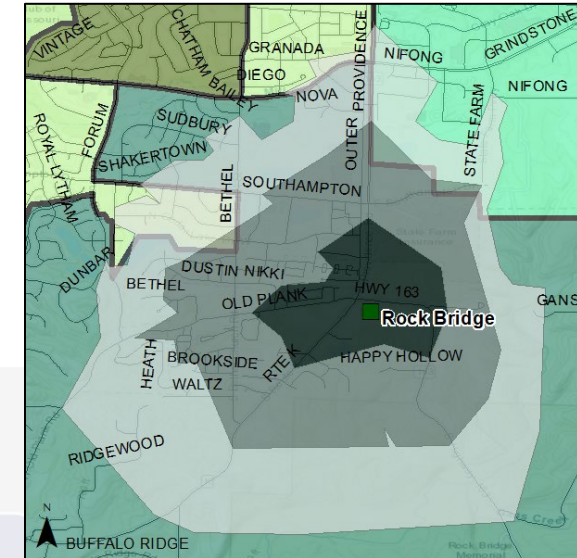


## Background Data

- Current utilizations
- Program placement
- Diversity goals
- Enrollment & housing yield projections
- Current state mapping: density, demographics, capacity, utilization, transfers, etc.
- Closest school analysis
- Project website; Transparency = Trust



Walk-Zone Map: Rock Bridge ES



# Attendance Area Planning Process

## Enrollment Projections by Boundary of Residence (geography-based)

### 10-year enrollment projections by grade, district-wide

- Developed using the cohort survival method
  - 10 years of historical enrollment by grade, by year, by boundary of residence
  - Historical resident live birth counts
- Housing
  - Building permits & housing development information
- Census datasets

Boundary Planning

Plan for Planning

Background Data

Redistricting Committee

Boundary Work-Sessions

Community Engagement

Recommendation

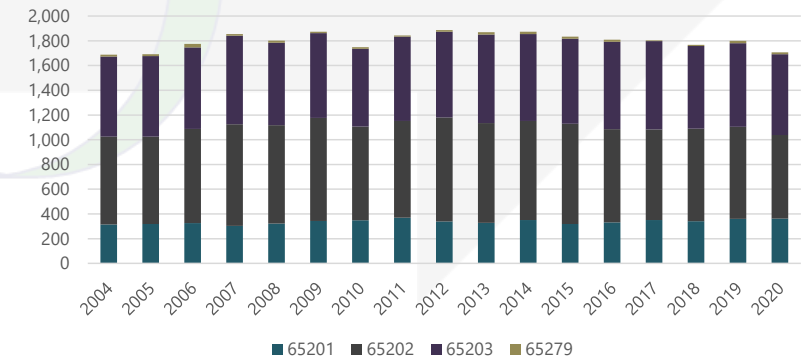
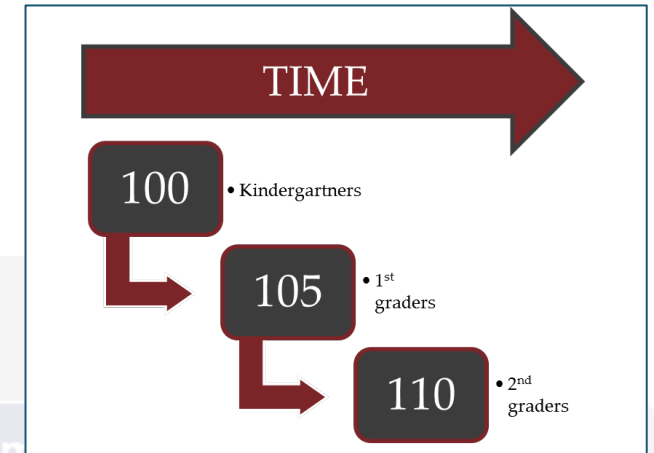
COLUMBIA PUBLIC SCHOOLS ZIP CODES

RESIDENT LIVE BIRTH COUNTS

Historical Enrollment - District-wide

Grade	2013-14	2014-15	2015-16	2016-17	2017-18	2018-19	2019-20	2020-21	2021-22	2022-23
K	1,441	1,404	1,307	1,337	1,421	1,442	1,451	1,165	1,428	1,336
1	1,423	1,457	1,383	1,338	1,381	1,443	1,460	1,326	1,317	1,490
2	1,371	1,431	1,454	1,378	1,331	1,381	1,465	1,375	1,368	1,339
3	1,388	1,345	1,424	1,459	1,399	1,347	1,393	1,373	1,399	1,401
4	1,382	1,384	1,340	1,400	1,474	1,395	1,352	1,317	1,388	1,429
5	1,305	1,366	1,403	1,365	1,403	1,475	1,392	1,295	1,340	1,394
6	1,250	1,265	1,345	1,339	1,356	1,412	1,455	1,371	1,284	1,347
7	1,275	1,254	1,248	1,356	1,348	1,369	1,436	1,428	1,356	1,319
8	1,309	1,264	1,271	1,273	1,364	1,358	1,402	1,436	1,432	1,356
9	1,282	1,331	1,268	1,297	1,365	1,433	1,447	1,417	1,462	1,511
10	1,269	1,244	1,321	1,293	1,307	1,340	1,449	1,452	1,399	1,480
11	1,252	1,287	1,219	1,327	1,270	1,308	1,352	1,446	1,402	1,456
12	1,196	1,216	1,229	1,171	1,305	1,210	1,228	1,305	1,392	1,374
<b>Grand Total</b>	<b>17,143</b>	<b>17,248</b>	<b>17,212</b>	<b>17,333</b>	<b>17,724</b>	<b>17,913</b>	<b>18,282</b>	<b>17,706</b>	<b>17,967</b>	<b>18,232</b>

Source: Columbia Public Schools Student Data

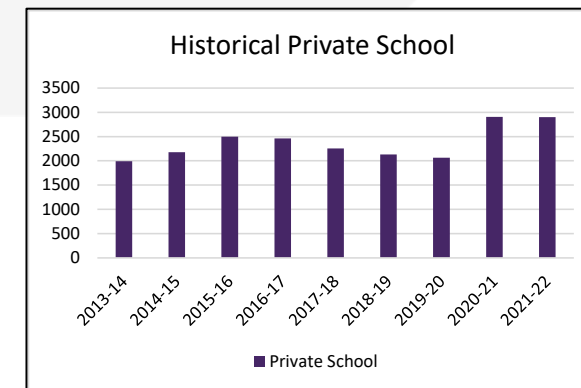
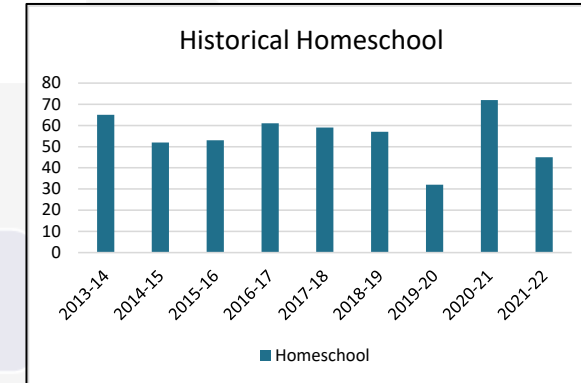
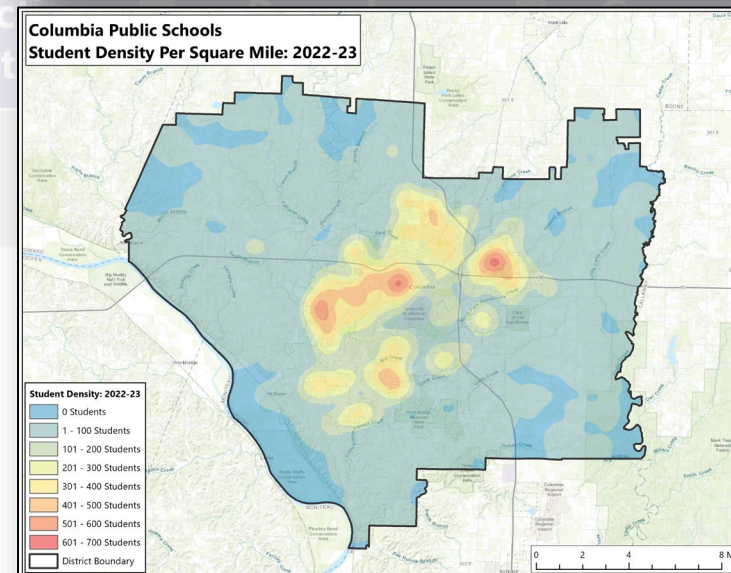
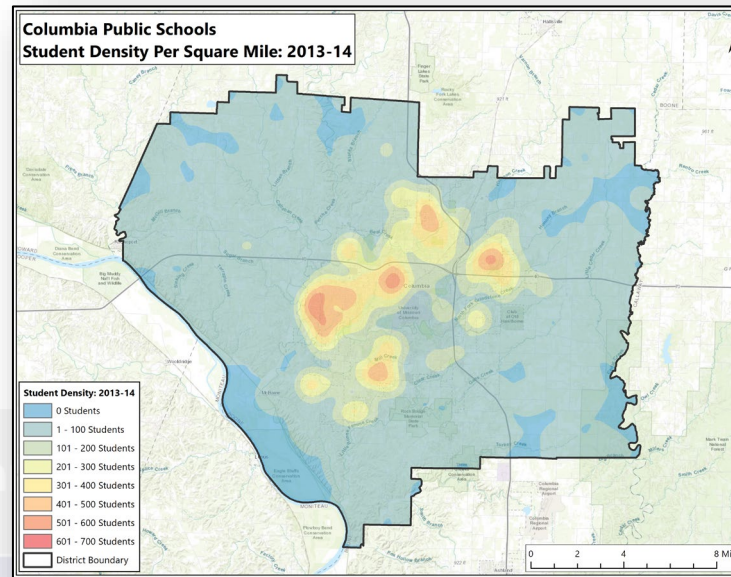


# Attendance Area Planning Process

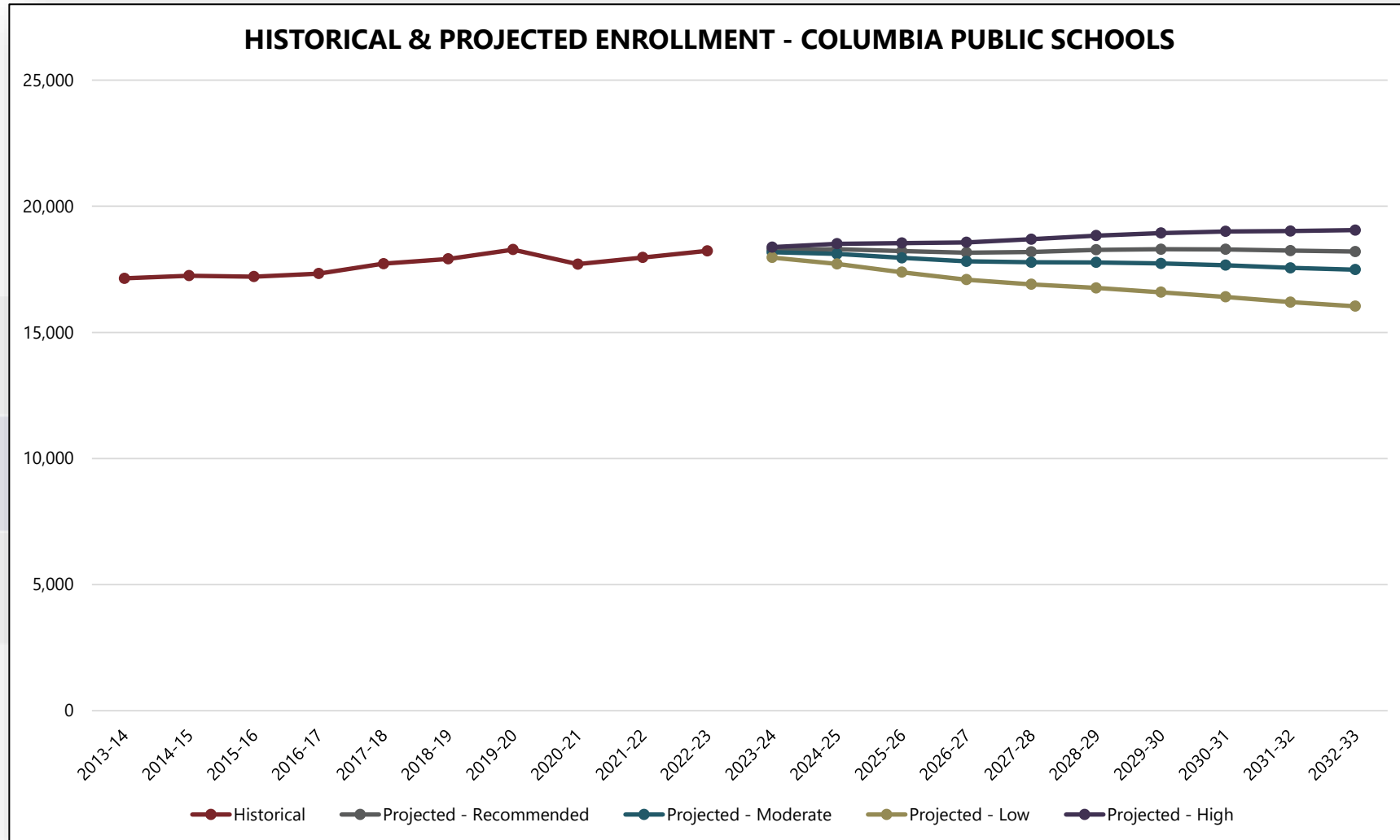
Historical Enrollment by Census Municipality	2013-14	2014-15	2015-16	2016-17	2017-18	2018-19	2019-20	2020-21	2021-22	2022-23
Columbia Public Schools Boundary	17,033	17,144	17,114	17,233	17,617	17,814	18,171	17,598	17,850	18,080
Boone County	99.4%	99.4%	99.4%	99.4%	99.4%	99.4%	99.4%	99.4%	99.3%	99.2%
Columbia township	17,061	17,171	17,140	17,254	17,643	17,841	18,197	17,624	17,880	18,136
Katy township	6,103	6,232	6,263	6,270	6,408	6,457	6,647	6,494	6,654	6,737
Missouri township	8,088	8,066	7,977	7,966	8,129	8,236	8,427	8,207	8,240	8,371
Perche township	274	269	264	259	271	284	285	272	255	252
Rock Bridge township	1,637	1,650	1,692	1,845	1,941	1,983	1,995	1,862	1,927	1,981
Rocky Fork township	125	136	138	120	121	127	118	120	101	96
Three Creeks township	213	208	205	193	188	192	170	146	145	145
Columbia city	12,370	12,463	12,504	12,679	13,069	13,340	13,700	13,419	13,660	13,954
Huntsdale town	-	-	1	2	2	2	2	2	2	2
McBaine town	1	1	2	2	2	2	2	2	2	2
Pierpont village	10	9	7	8	8	8	8	7	4	4
Rocheport city	-	-	-	1	1	-	-	-	-	-
Total Students*	17,143	17,248	17,212	17,333	17,724	17,913	18,282	17,706	17,967	18,232

Source: Columbia Public Schools Student Data

\*This total reflects the amount of District students, not a total of the values in the table.



# Attendance Area Planning Process



Plan for  
Planning

Recommendation



# Attendance Area Planning Process



Plan for  
Planning

Background  
Data

**Steering  
Committee**

- School & community stakeholders
- Geographically diverse
- Agrees to consider the District as a whole
- Focus Groups

Boundary  
Work-Sessions

Community  
Engagement

Recommendation

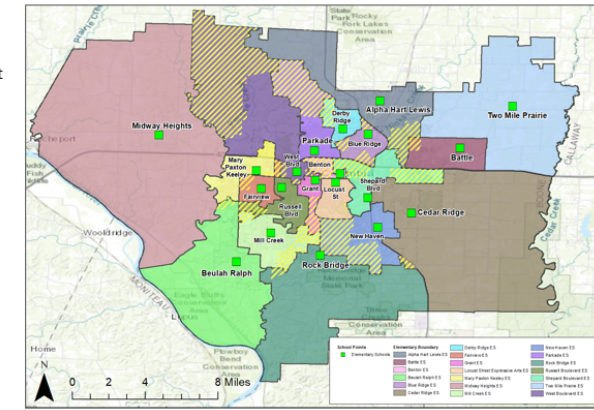
# Attendance Area Planning Process

- Develop and revise boundary options
- Plan for Background Redistricting
- Use boundary planning criteria to guide options creation

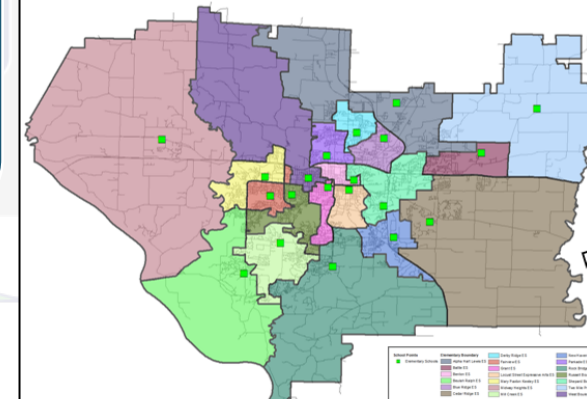
## Boundary Work-Sessions

### ► REVISED SCENARIO 1 CHANGE AREAS

- No new areas are impacted; some areas may be assigned to a school that was not within the first round of scenarios
- Any school at 60% or more low SES is left slightly under-utilized (in the 80%'s)
- Alpha Hart Lewis, Mill Creek, Shepard Blvd have islands
- Growth around Gans Rd pointed to Rock Bridge (instead of New Haven)
- Areas with potential growth (Rock Bridge, Cedar Ridge, Midway Heights) have some space available
- 2,213 K-5 students moved = 26%
  - 1,846 K-4 students



### ► WYNDHAM RIDGE REVISED SCENARIO 2A



School	Capacity (No. Students)	Live-In Enrollment	Utilization	Low SES %
Alpha Hart Lewis ES	650	558	86%	58%
Bentley ES	650	417	64%	58%
Beulah Ralph ES	650	623	96%	21%
Blue Ridge ES	500	462	92%	66%
Cedar Ridge ES	650	500	77%	12%
Dorby Ridge ES	556	479	86%	62%
Fairview ES	550	506	92%	28%
Grant ES	375	333	89%	30%
Leland Street Elementary ES	250	87	35%	29%
Mary Paxton Kenney ES	723	683	94%	12%
Midway Heights ES	295	227	77%	28%
Mill Creek ES	673	616	92%	10%
New Haven ES	293	262	89%	59%
Parkside ES	478	480	100%	46%
Rock Bridge ES	650	573	88%	13%
Russell Boulevard ES	650	551	85%	25%
Shepard Boulevard ES	652	554	85%	59%
Two Mile Prairie ES	195	187	96%	14%
West Boulevard ES	438	383	88%	65%
<b>TOTAL</b>	<b>9,938</b>	<b>8,545</b>	<b>86%</b>	<b>42%</b>

Steinbrooke Terrace is assigned to BEU in Revised Scenario 2a (no other changes):  
Beulah Ralph: 93% to 96%  
Mill Creek: 94% to 92%

# Attendance Area Planning Process



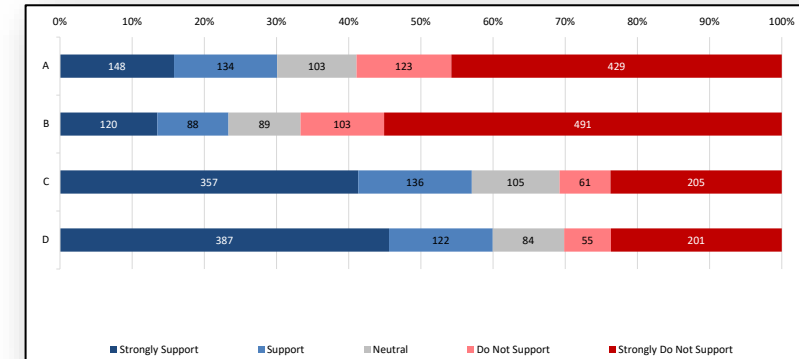
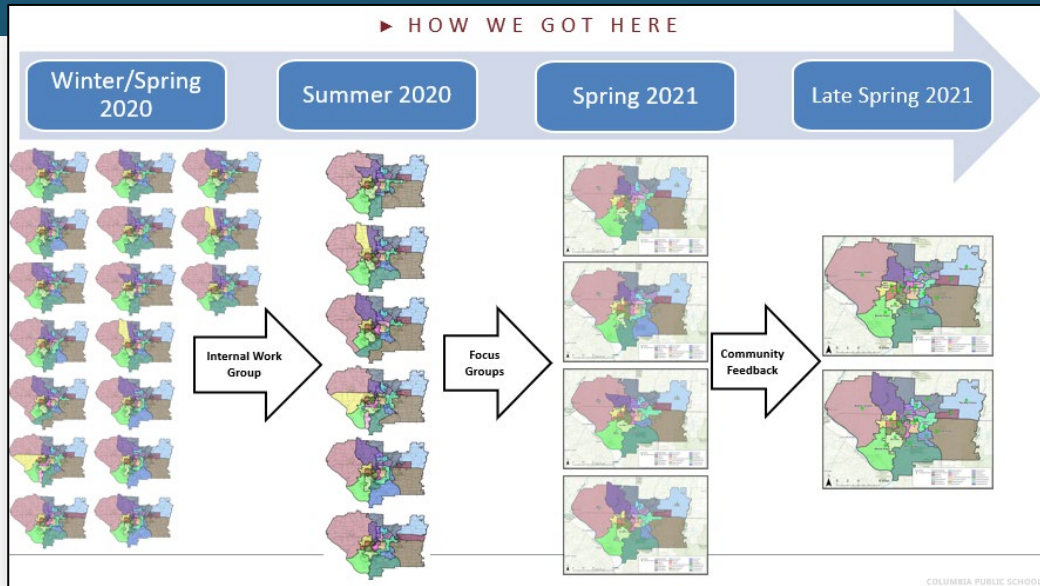
- Present boundary options to community for buy-in and feedback
- Ensure community understands process, reasoning behind boundary adjustments
- In-person & online feedback opportunities
- Report community feedback

**Community  
Engagement**

Recommendation



# Attendance Area Planning Process

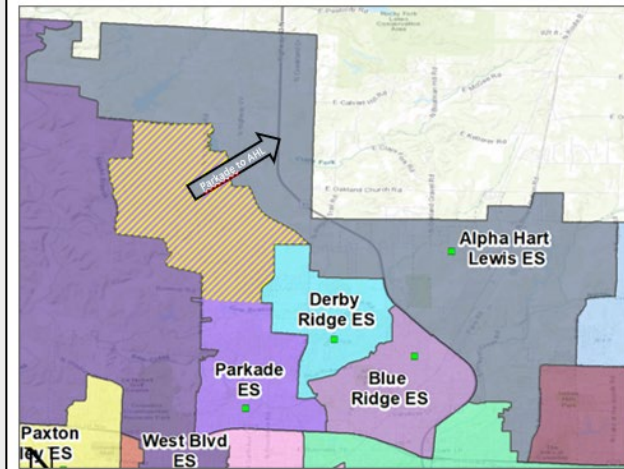


- **Revise boundary options based on community & committee feedback**



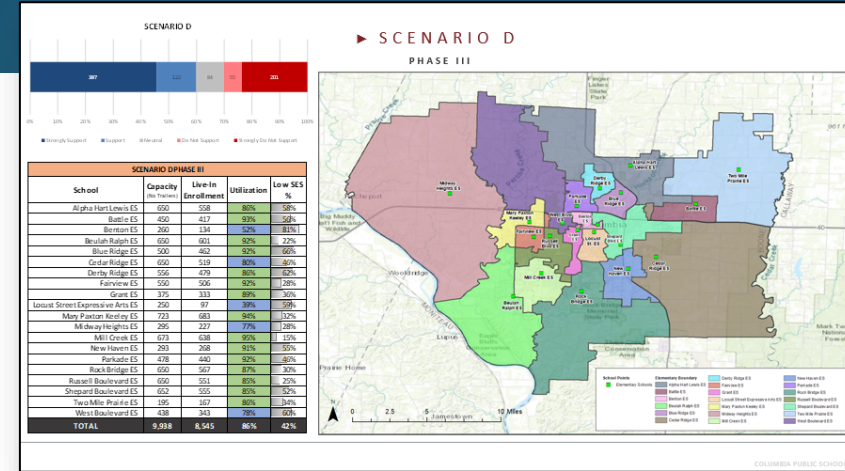
# Attendance Area Planning Process

## ► PHASE 1 RELIEF TO PARKADE



### Feedback Summary:

- Some respondents have said that this move makes sense, especially for those impacted on the northernmost portion of the current Parkade attendance area
- Some respondents would prefer to stay at Parkade Elementary
- Some appreciate the increase feeder % to West MS (currently only 4% of Alpha Hart Lewis ES students are slated to attend West MS)
- There is concern regarding the 96% utilization at Alpha Hart Lewis ES



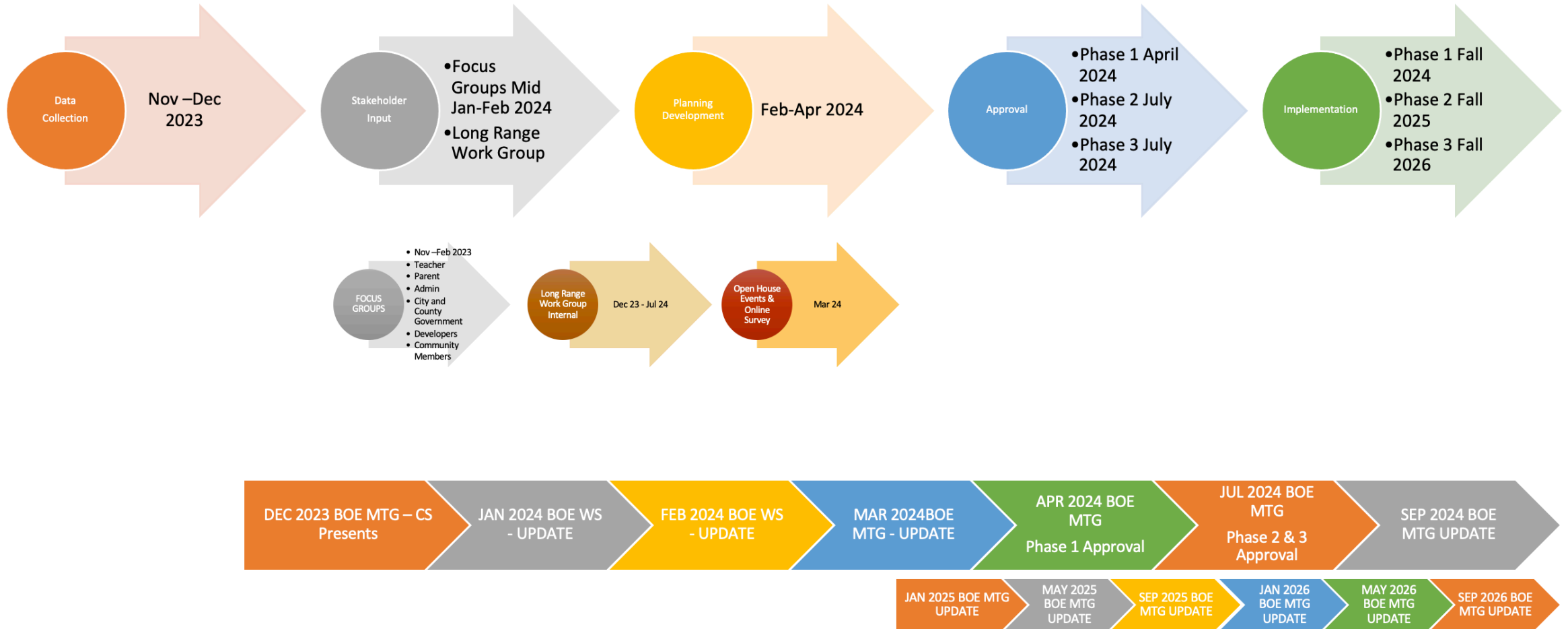
Planning

- Alignment with CPS Guiding Principles
- Support community feedback

Recommendation

Board Guidelines: Based on 22-23 School Year (not long term)									Additional Metrics			
Scenario:	Minimize disruption (short term)	Keep siblings together	Balanced Enrollment	Average Balanced SES	Transportation	Keep Neighborhoods together	Feeder Splits?	Follow natural boundaries	# of schools impacted	# of students impacted	Utilization Ranges	Socioeconomic Ranges
Scenario A	2	Based on grandfathering provisions	1	2	All scenarios are feasible for transportation	Neighborhood lines are subjective	2	2	13	536	ES: 67% - 91% MS: 97% - 100% HS: 77% - 81%	ES: 45% - 79% MS: 53% - 58% HS: 43% - 46%
Scenario B	4		1	1			1	2	15 (all)	1,079	ES: 69% - 90% MS: 97% - 101% HS: 76% - 82%	ES: 41% - 80% MS: 55% - 56% HS: 43% - 46%
Scenario C	3		3	2			1	2	15 (all)	631	ES: 69% - 92% MS: 95% - 102% HS: 73% - 86%	ES: 41% - 80% MS: 54% - 58% HS: 44% - 46%

# Draft Process Timeline





# Questions for Board Members

What would you consider a successful outcome of this process?

Are there any additional factors would you like us to consider?  
(Beyond the Guiding Principles)

**Thank You!**