

# Art Windows

## Virtual Gallery



Cover Art by Amani P., 12th grade, Battle High School

# Table of Contents

---

## 3 Partners In Education Awards

### **Student Artwork**

## 5 Cedar Ridge Elementary School

## 14 Grant Elementary School

## 19 Locust Street Expressive Arts Elementary School

## 23 Mill Creek Elementary School

## 25 Parkade Elementary School

## 39 Jefferson Middle School

## 56 John Warner Middle School

## 59 Oakland Middle School

## 65 Battle High School

## 83 Hickman High School

## 86 Rock Bridge High School

## 88 CPS Partners In Education



The Office of Cultural Affairs (OCA) is a department of the City of Columbia whose mission is to create an environment where artists and cultural organizations thrive by advancing and supporting the arts for the benefit of the citizens of Columbia.

In addition to initiating or supporting a variety of arts and culture programs, the OCA administers the city's Percent for Art program, which allows for 1% of the cost of new city construction or renovation over \$1 million to be used for site-specific public art, as well as overseeing funding programs for local arts and cultural organizations.

OCA is proud to serve as Partner in Education to the Columbia Public Schools Fine Arts Department and to present the annual PIE Art Windows experience on a virtual platform for the 2022-2023 school year.



The arts have always served as the distinctive vehicle for discovering who we are. Providing ways of

thinking as disciplined as science or math and as disparate as philosophy or literature, the arts are used by and have shaped every culture and individual on earth. They continue to infuse our lives on nearly all levels—generating a significant part of the creative and intellectual capital that drives our economy. The arts inform our lives with meaning every time we experience the joy of a well-remembered song, experience the flash of inspiration that comes with immersing ourselves in an artist's sculpture, enjoying a sublime dance, learning from an exciting animation, or being moved by a captivating play.



# WHAT IS Partners in Education?

---

Partners in Education joins a local business with an individual school, curriculum department, or grade level. Each partnership establishes a mission statement, objectives, and activities specific to both the business' and schools' needs and abilities.

The overall goal of Columbia's Partners in Education (PIE) program is to build bridges between the world of business and the world of education. It seeks to create a better understanding of the public school system within the community; to strengthen and enhance the district's programs; to create a climate of involvement and interaction between organizations, businesses, and schools; and to provide students opportunities to develop attitudes and skills that enhance their success in the world of work.

For more information or to become involved in the Partners in Education program contact the school district's Community Relations office at (573) 214-3960 or visit [www.cpsk12.org/pie](http://www.cpsk12.org/pie).

## **The History of Partners in Education**

Columbia Public Schools' Partners in Education program is celebrating 39 years of businesses bringing achievement, enrichment, innovation, and opportunities to schools and students.

Partners in Education began as a simple vision of Former Superintendent, Russell Thompson, Former Superintendent, Jim Ritter and, School-Community Program Director, Jolene Schulz. Together, they studied an "adopt-a-school" program, but wanted the CPS program to be based on a hand-shake, not a handout. They molded this idea into a program that would benefit Columbia Public Schools, a true "partnership" between local businesses and schools. Partners in Education, became the national moniker when President Reagan accepted the idea and gave it national status.

Over the course of more than three decades, Columbia Public Schools has seen tremendous achievements by Columbia's youth due to the involvement and dedication of partnering businesses. The original nine charter partnerships have grown to an unbelievable 150 Partners in Education and more than 100 Partnership Friends. These partners include banks, hospitals, architects, veterinarians, grocery stores, media outlets, non-profits, churches, insurance companies and more.

Over the years, partnership activities have expanded and now include opportunities such as a satellite school located within a business, job shadowing and business tours, classroom presentations, banks within schools, and mentoring. Hundreds of students and community members have participated in the program, and throughout the years, strong friendships have been built that have endured even as students and employees grow and change.



**The Columbia Public School District's Partners In Education program provides a vehicle through which our schools and our community can come together and through a mutual sharing of resources, strengthen our schools' programs and enhance our community's economic growth.**

**2022 –  
2023**

# **39<sup>th</sup> Anniversary**

## **Partners In Education**

**40 businesses will celebrate anniversaries with their partner schools and programs**

### **Partners In Education**

#### **35 Years (1988-2023)**

- MU Operations - Columbia Area Career Center
- Boone County Bar Association -- CPS Social Studies

#### **30 Years (1993-2023)**

- City of Columbia -- Columbia Public Schools
- City of Columbia Public Works -- Columbia Public Schools
- City of Columbia Water & Light -- Columbia Public Schools
- City of Columbia Office of Cultural Affairs -- CPS Fine Arts
- Columbia/Boone County Health Department -- CPS Health Services
- City of Columbia Parks & Recreation -- CPS Athletics
- Columbia Environmental Research Center -- New Haven Elementary School
- Missouri Department of Conservation Resource Science Center -- Rock Bridge Elementary School

#### **25 Years (1998-2023)**

- Harry S. Truman Memorial Veterans' Hospital -- Frederick Douglass High School
- Columbia Insurance Group -- Mill Creek Elementary School
- Memorial Baptist Church -- Benton STEM Elementary School
- Lenoir Woods -- New Haven Elementary School

#### **20 Years (2003-2023)**

- AAUW -- Benton STEM Elementary School
- Boys & Girls Club of Columbia Area -- Columbia Public Schools
- City of Columbia Neighborhood Services -- Columbia Public Schools
- Columbia Metro Rotary Club -- CPS Preschool Programs
- KRCG -- Fairview Elementary School
- Barnes & Noble Booksellers -- Mary Paxton Keeley Elementary School
- Missouri Credit Union -- Rock Bridge Elementary School

#### **15 Years (2008-2023)**

- Midway Electric -- Midway Heights Elementary School
- River Region Credit Union -- Cedar Ridge Elementary School
- MU College of Veterinary Medicine -- CPS Science

#### **5 Years (2018-2023)**

- Fox 22(KQFX) -- Eliot Battle Elementary School
- Broadway Christian Church -- Center for Early Learning North



## Partnership Friends

### 30 Years (1993-2023)

- Olive Garden -- Columbia Public Schools

### 25 Years (1998-2023)

- Shakespeare's Pizza -- Columbia Public Schools
- Boone County Fire Protection District -- Midway Heights Elementary
- Midway Optimist Club -- Midway Heights Elementary

### 20 Years (2003-2023)

- Italian Village -- Columbia Public Schools
- Regal Columbia Theaters -- Columbia Public Schools
- Bob Evans Restaurant -- Columbia Public School

### 15 Years (2008-2023)

- Lee's Famous Recipe Chicken -- Columbia Public Schools
- Salvation Army -- Columbia Public Schools
- Tiger Family Chiropractic and Wellness Center -- Columbia Public Schools
- Subway -- Columbia Public Schools

### 10 Years (2013-2023)

- Columbia Center for Urban Agriculture -- Columbia Public Schools

### 5 Years (2018-2023)

- Mathnasium -- Columbia Public Schools
- Zaxby's -- Columbia Public Schools



# Cedar Ridge Elementary



Amareya K., 2nd grade





Amelia H., 3rd grade



Amelia K., 2nd grade



Anniyah W., 5th grade



Chaisley N., 2nd grade





Evan M., 2nd grade



Fritz M., 2nd grade





Grant B., 5th grade



Jayce F., 5th grade

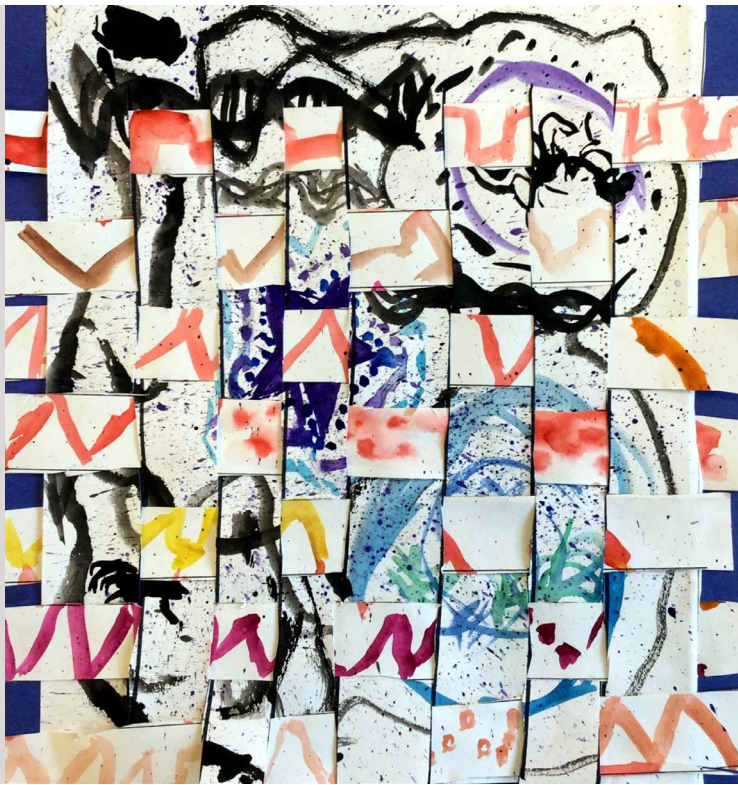




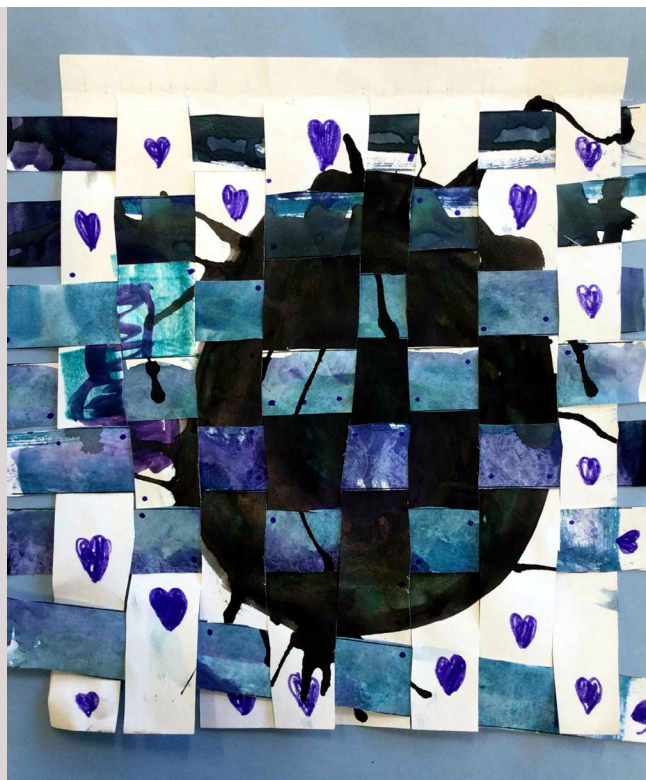
Lily B., 3rd grade



Reagan B., 3rd grade



Roman T., 2nd grade



Ruby W., 2nd grade





Ryan C., 5th grade



Shawn H., 3rd grade



Sophia N., 5th grade



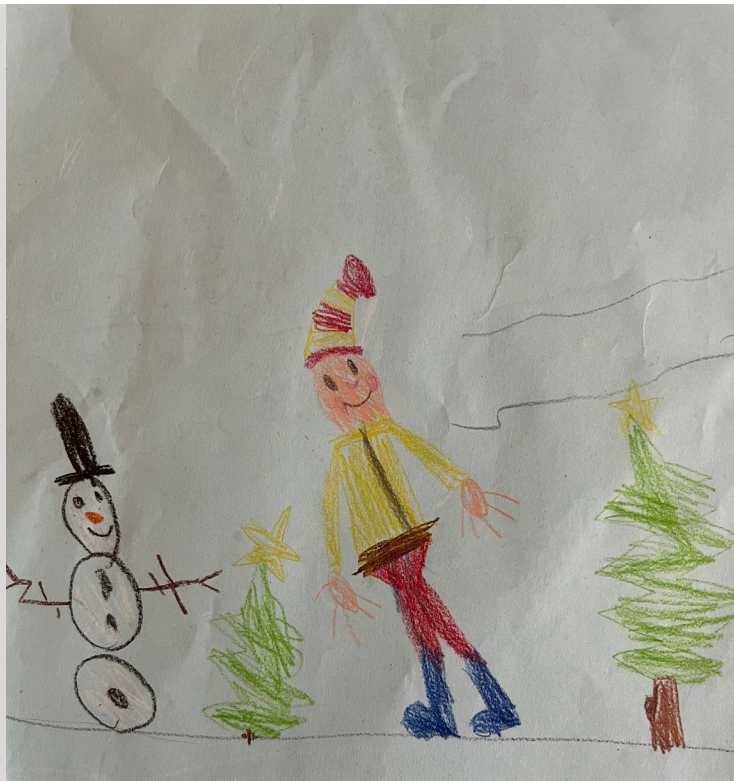
Veyda R., 2nd grade





**Grant Elementary**  
*A community of learners*

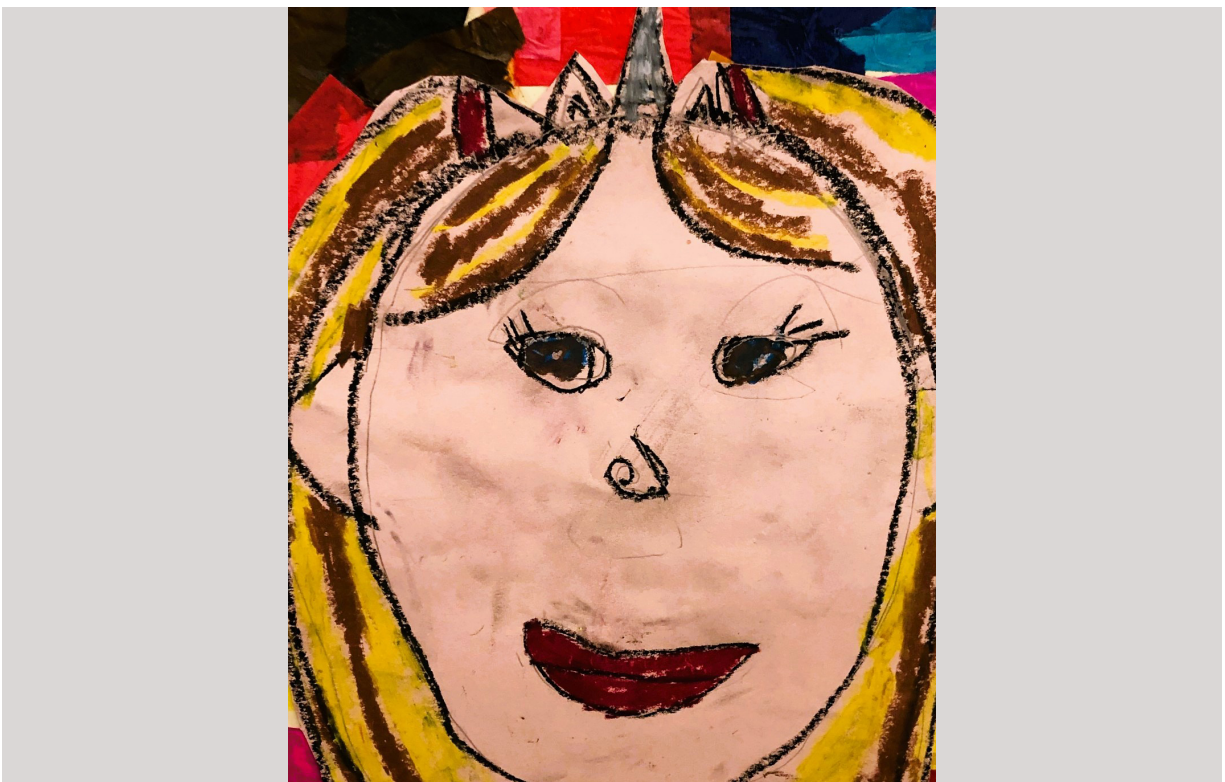
# Grant Elementary



Archer M., Elementary



Lillian N., Elementary



Nikki M., Elementary





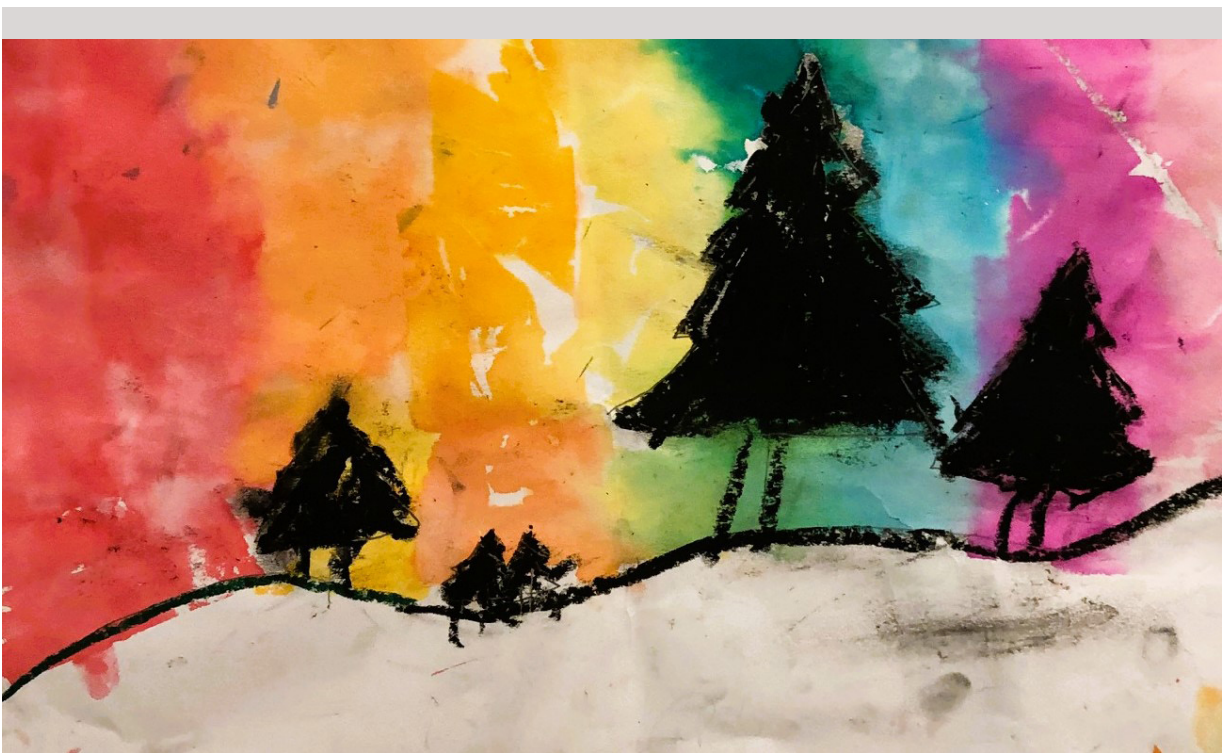
Nikki M., Elementary



Nikki M., Elementary

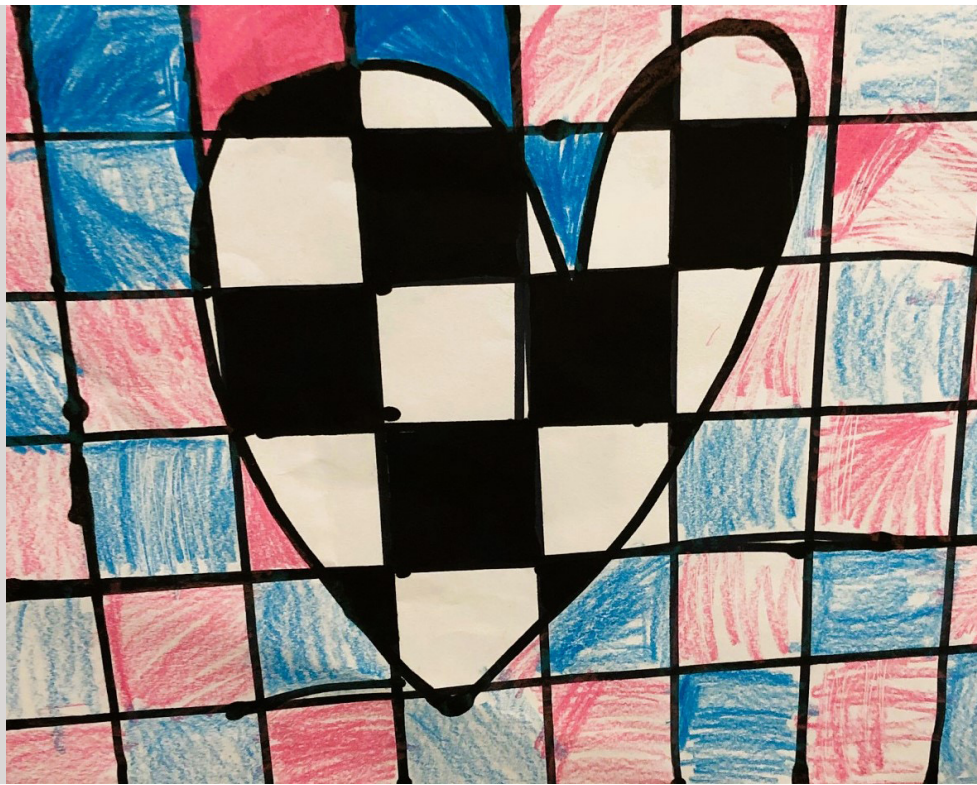


Nikki M., Elementary

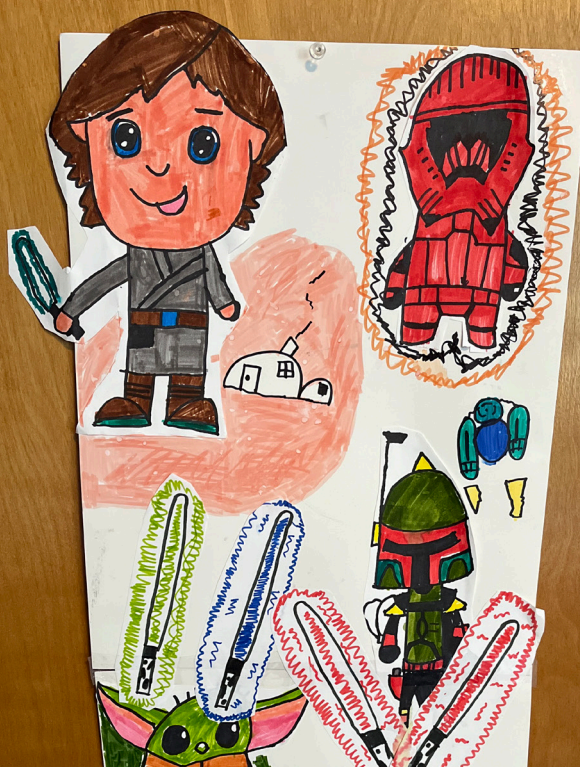


Nikki M., Elementary





Nikki M., Elementary



Sebastian V., Elementary



# Locust Street Elementary

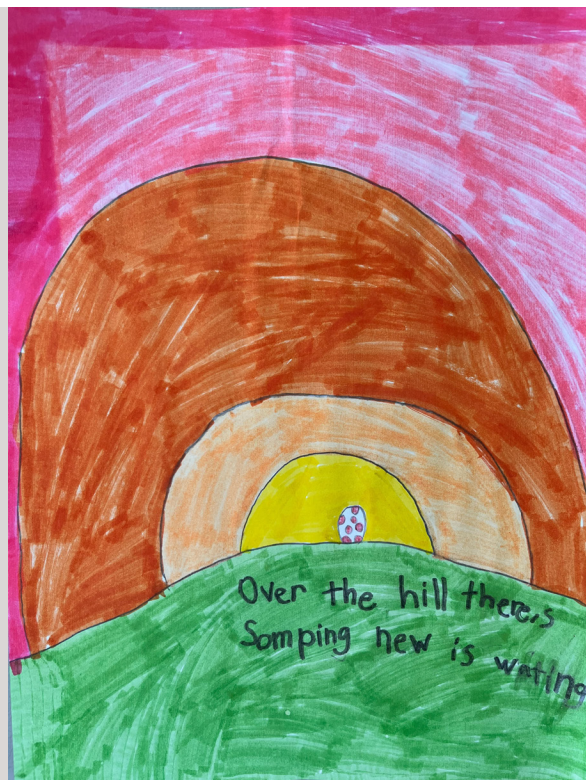


Tally H., 2nd grade



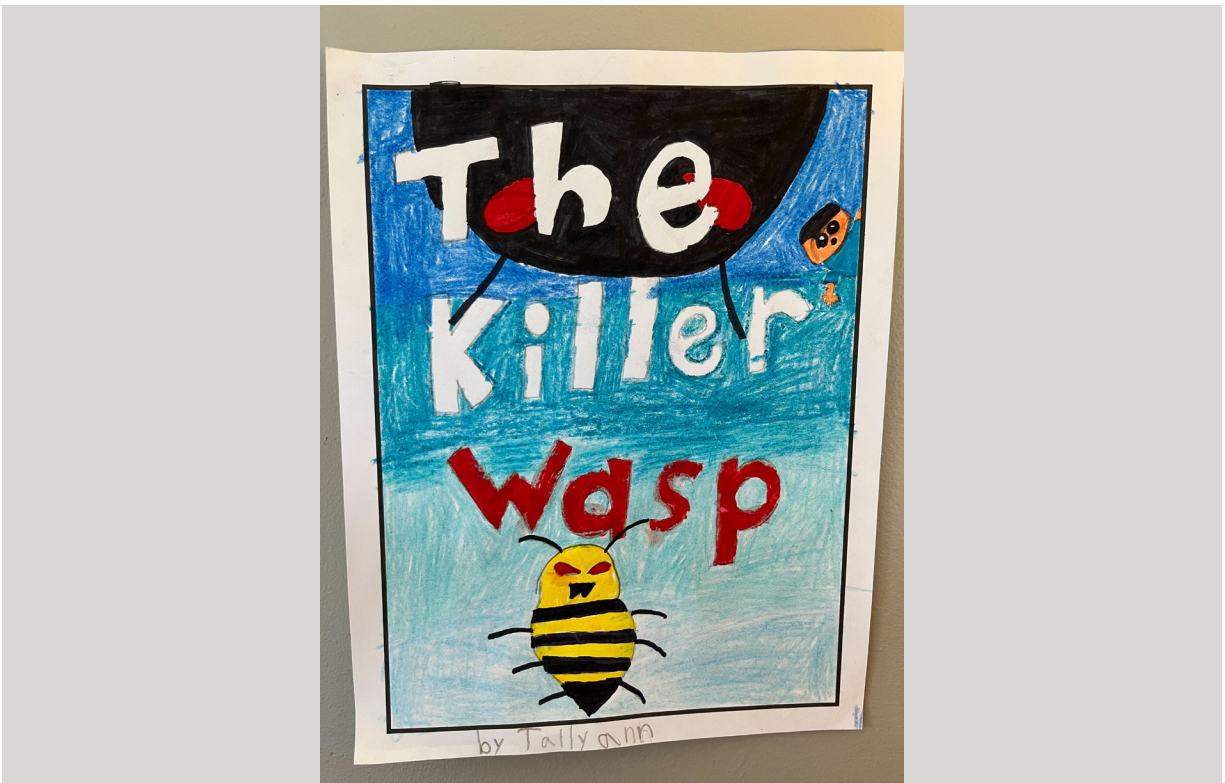


Tally H., 2nd grade



Tally H., 2nd grade





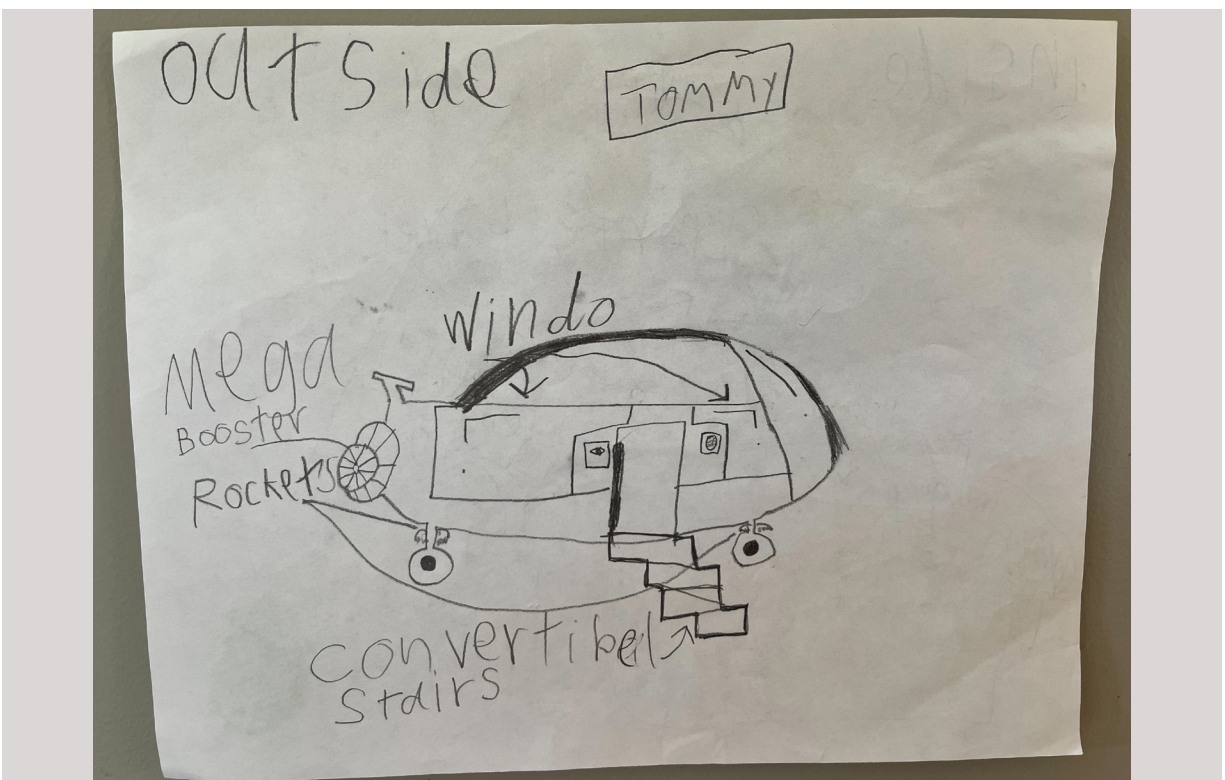
Tally H., 2nd grade



Tommy H., 2nd grade



Tommy H., 2nd grade



Tommy H., 2nd grade







Joshua D., Elementary



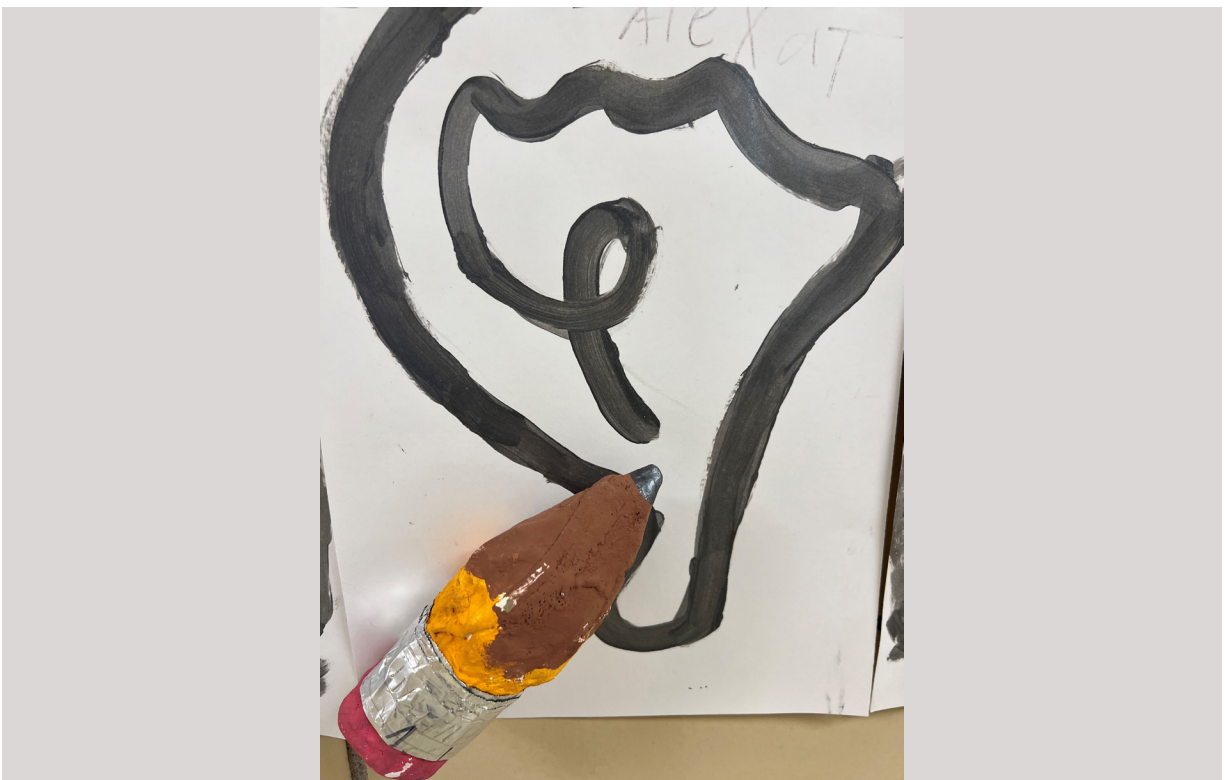
# Parkade Elementary



Alaina T., 1st grade



Alasia J., 2nd grade

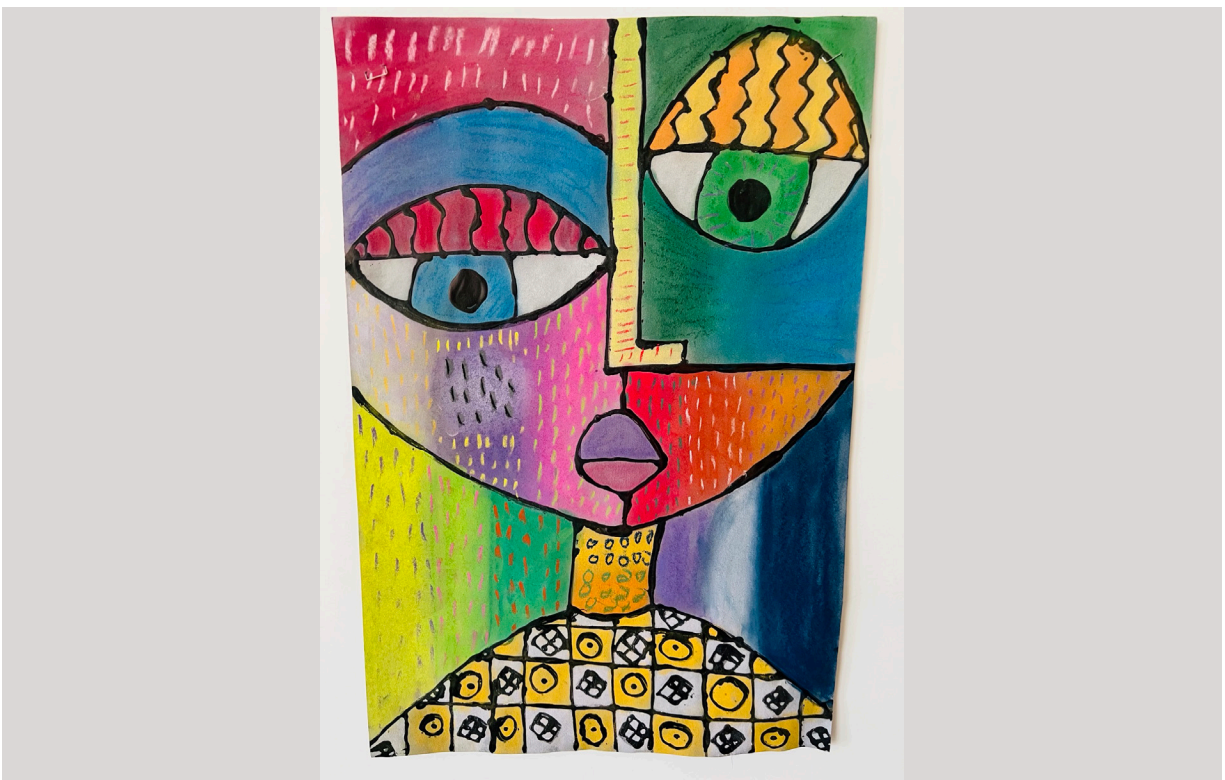


Alexa T., 2nd grade

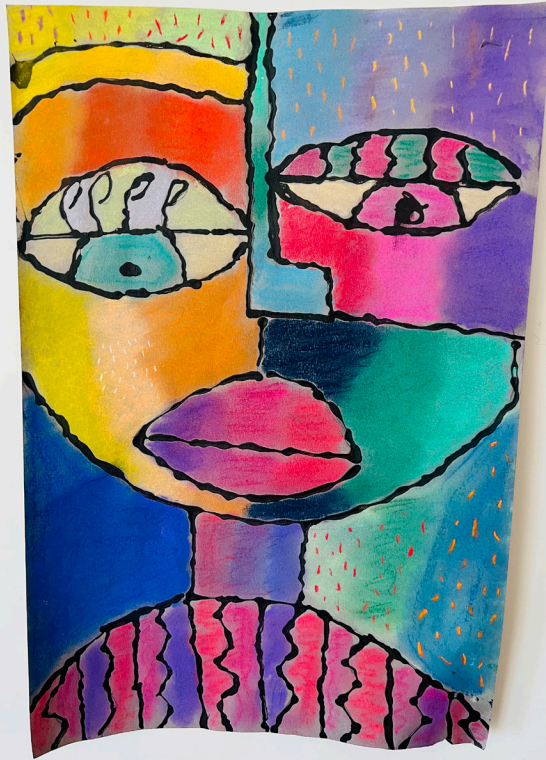




Asenath G, 2nd grade



Cailyn K., 5th grade



Ellie V., 5th grade

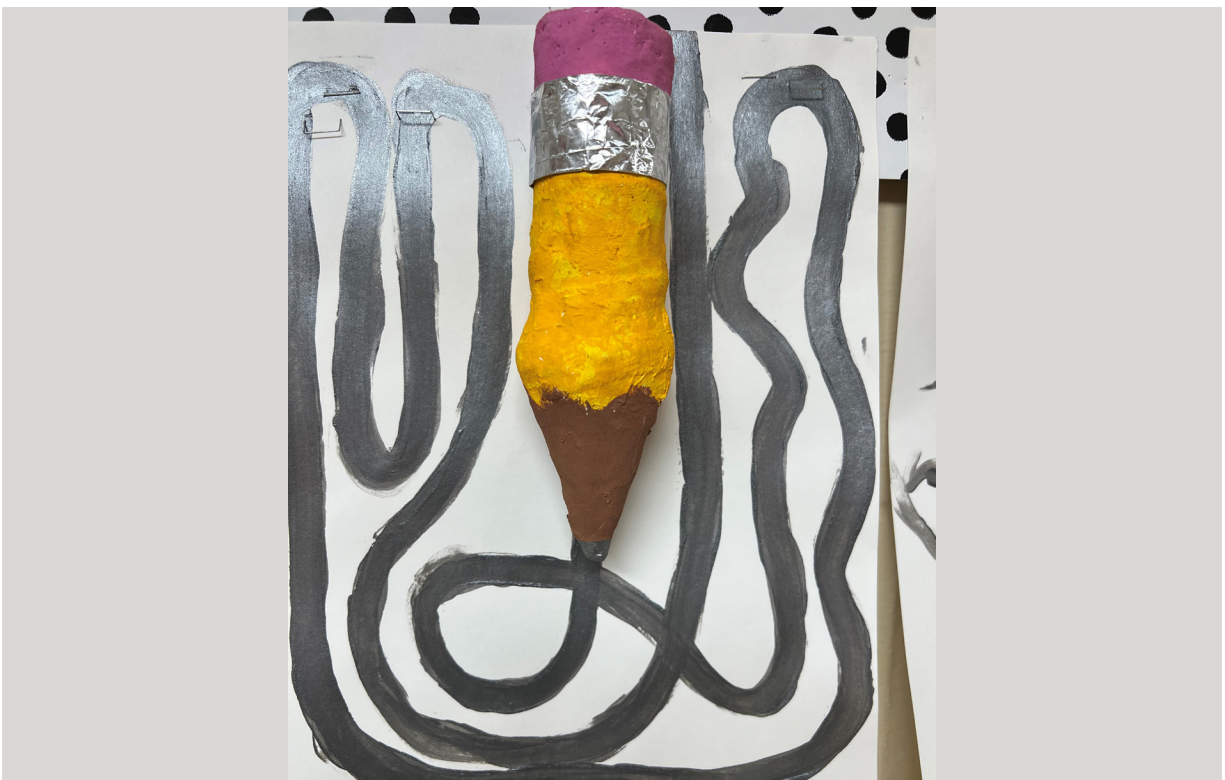


Ailliott I., 5th grade





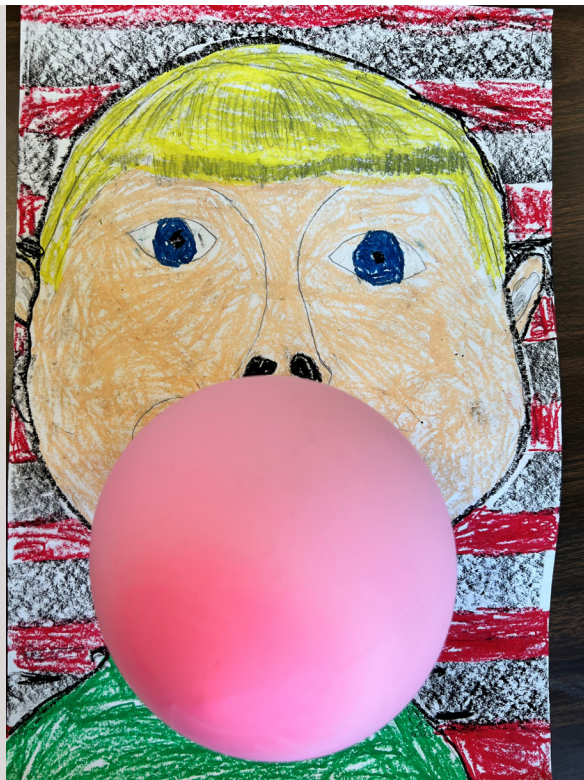
Hannah W., 2nd grade



Hannah W., 2nd grade

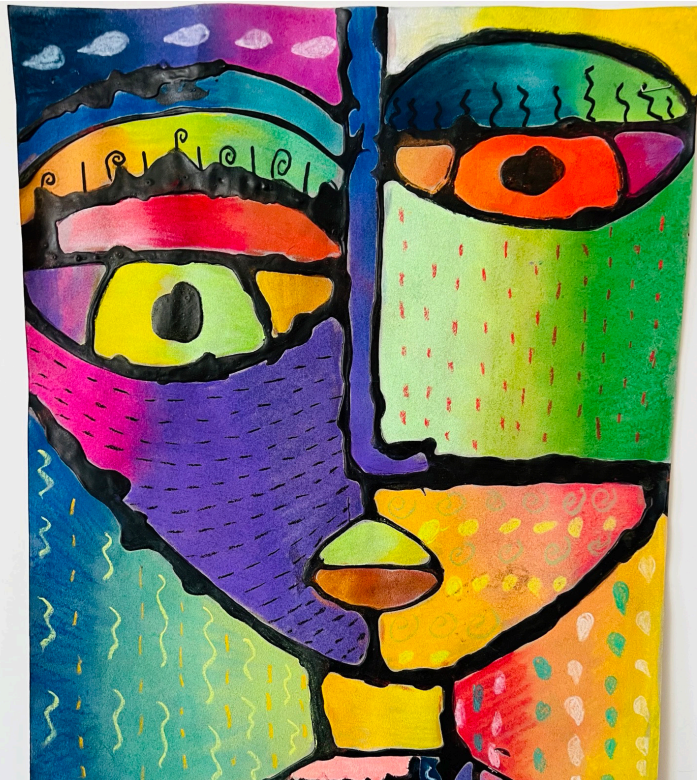


Henry D., 1st grade



Jasper H., 1st grade





Kaizeana T., 5th grade



Levi L., 1st grade

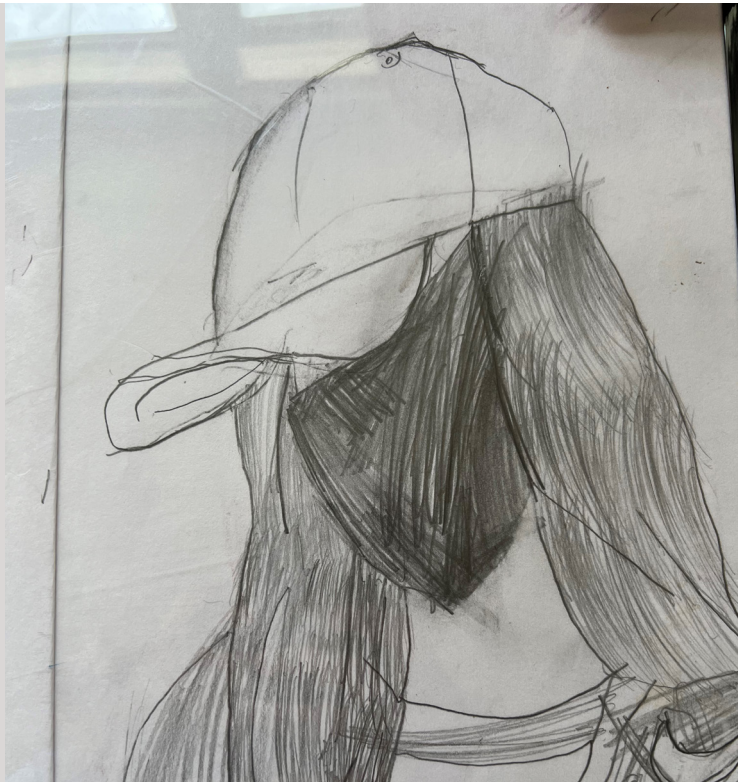


Mackenzie N., 2nd grade



Marley W., 2nd grade





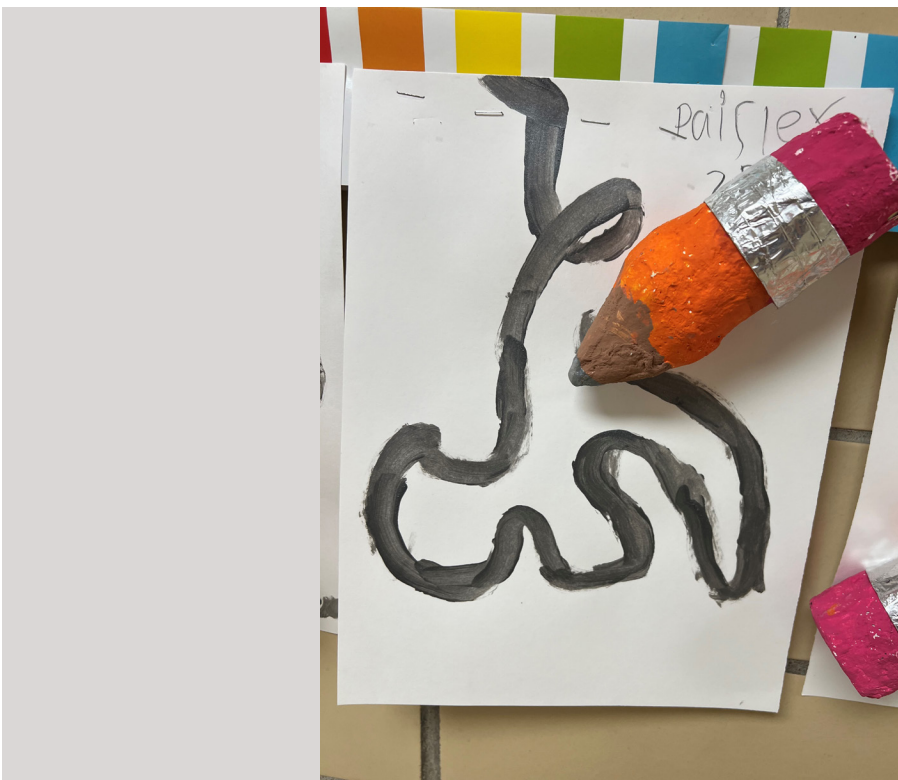
Natalie M., 3rd grade



Niya S., 2nd grade



Orsen C., 2nd grade



Paisley F., 2nd grade





Trintt T., 1st grade



Turner B., 5th grade



Virna E., 1st grade





Zaniah W., 2nd grade

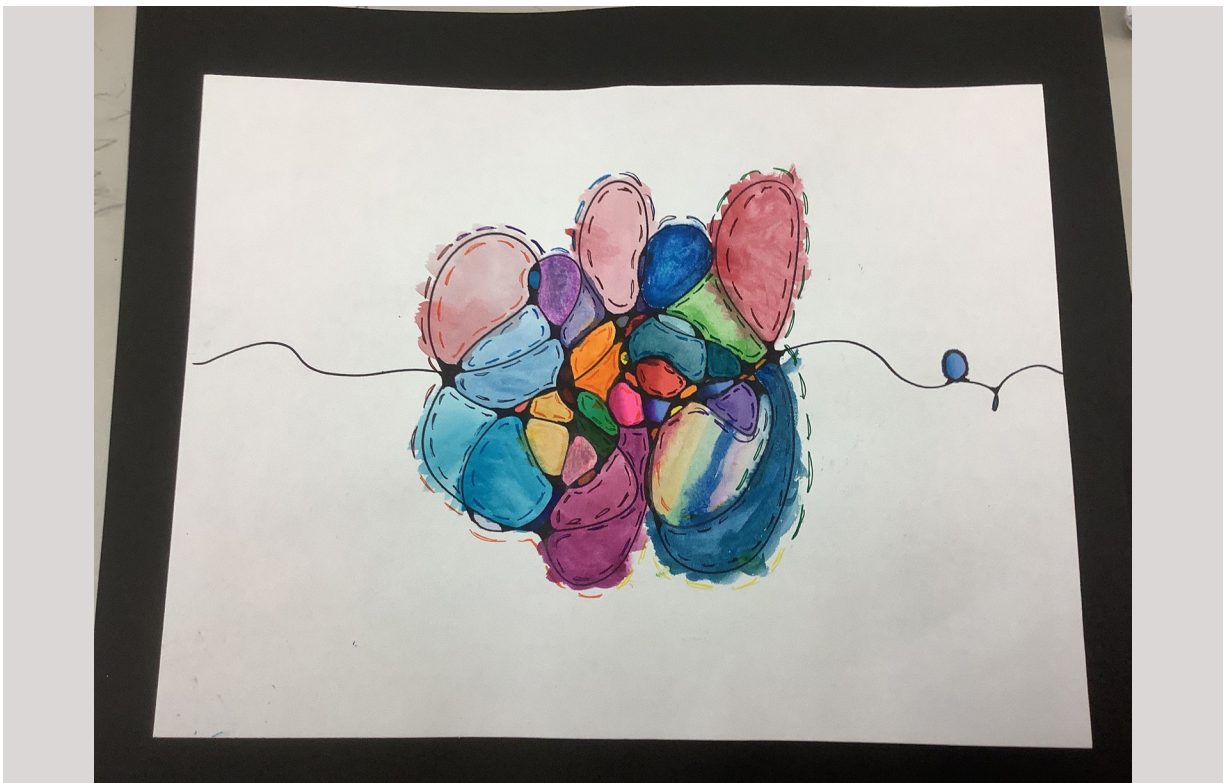


Zoey B., 5th grade

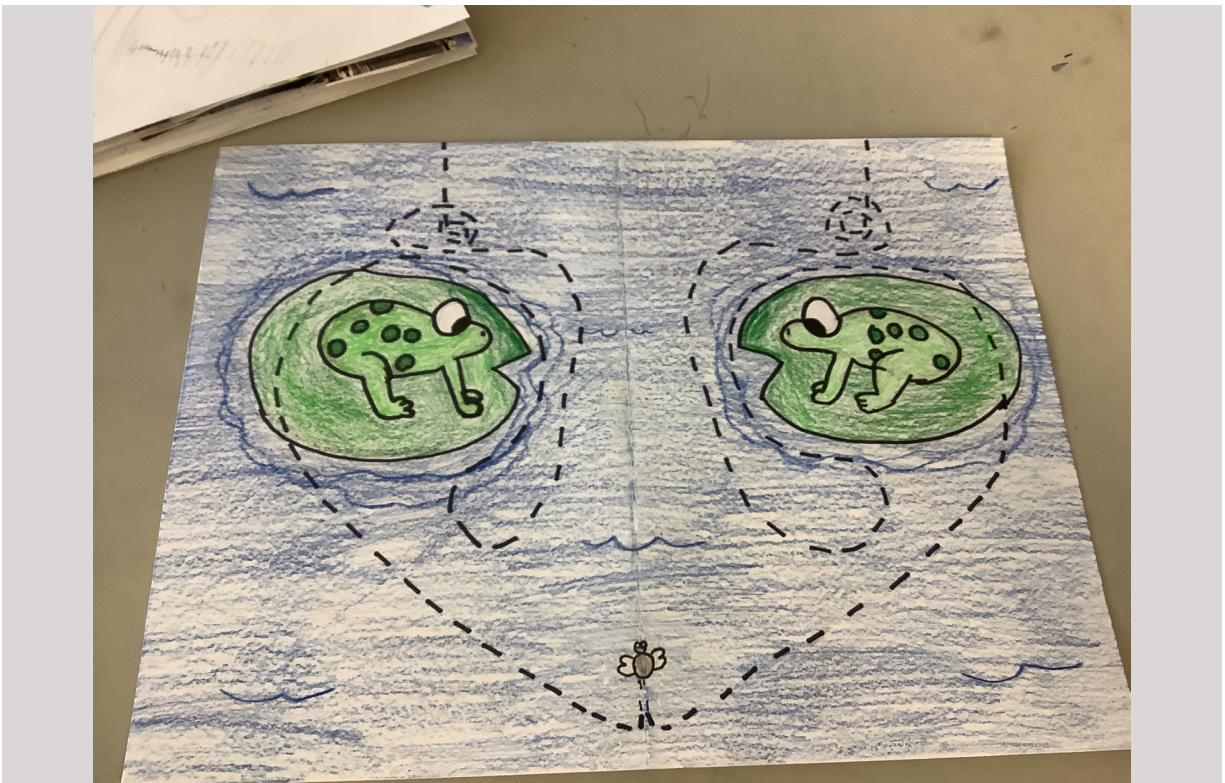




# Jefferson Middle School



Abigail HL., 8th grade

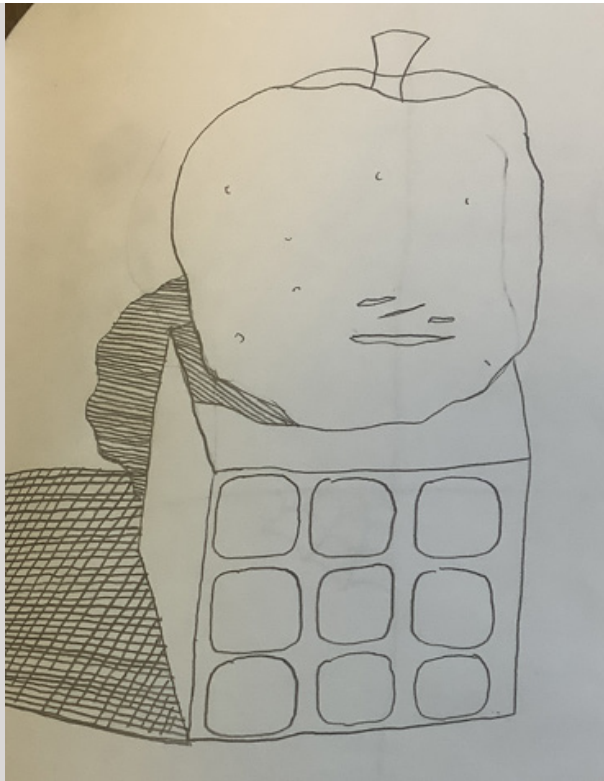


Cameron M., 8th grade

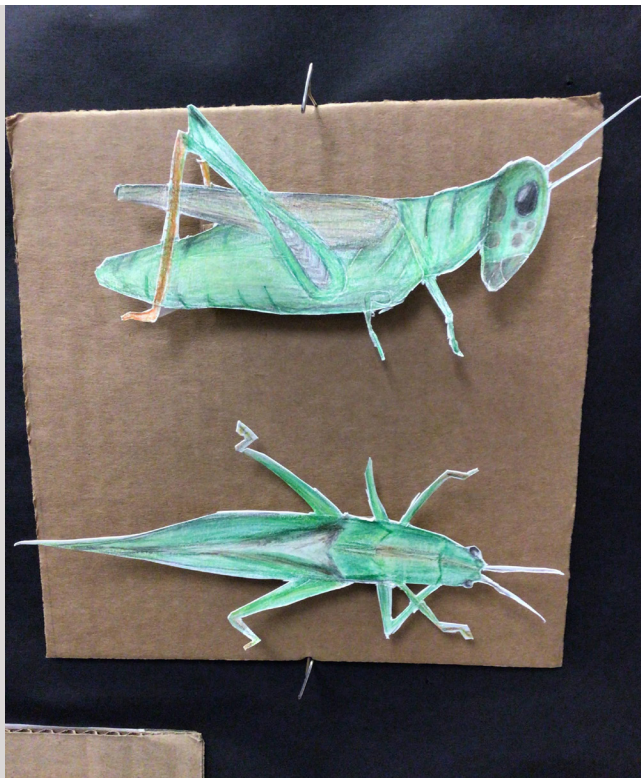


Cameron M., 8th grade

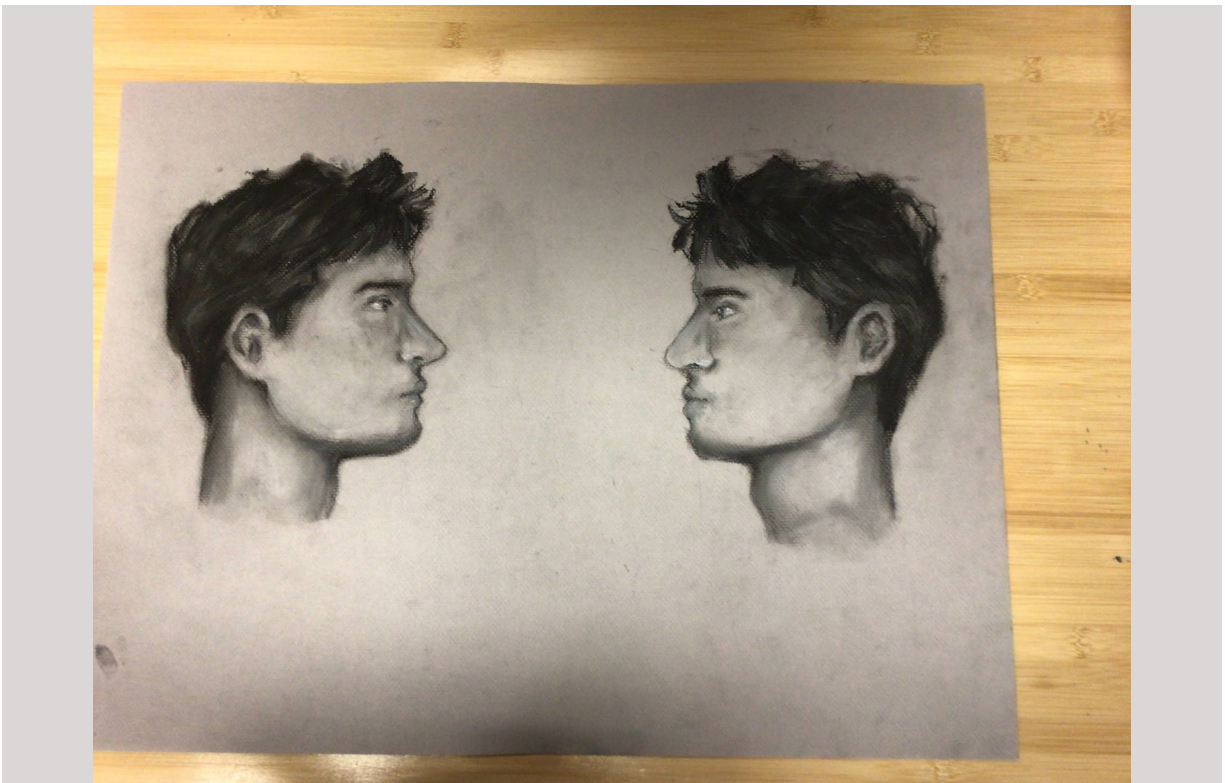




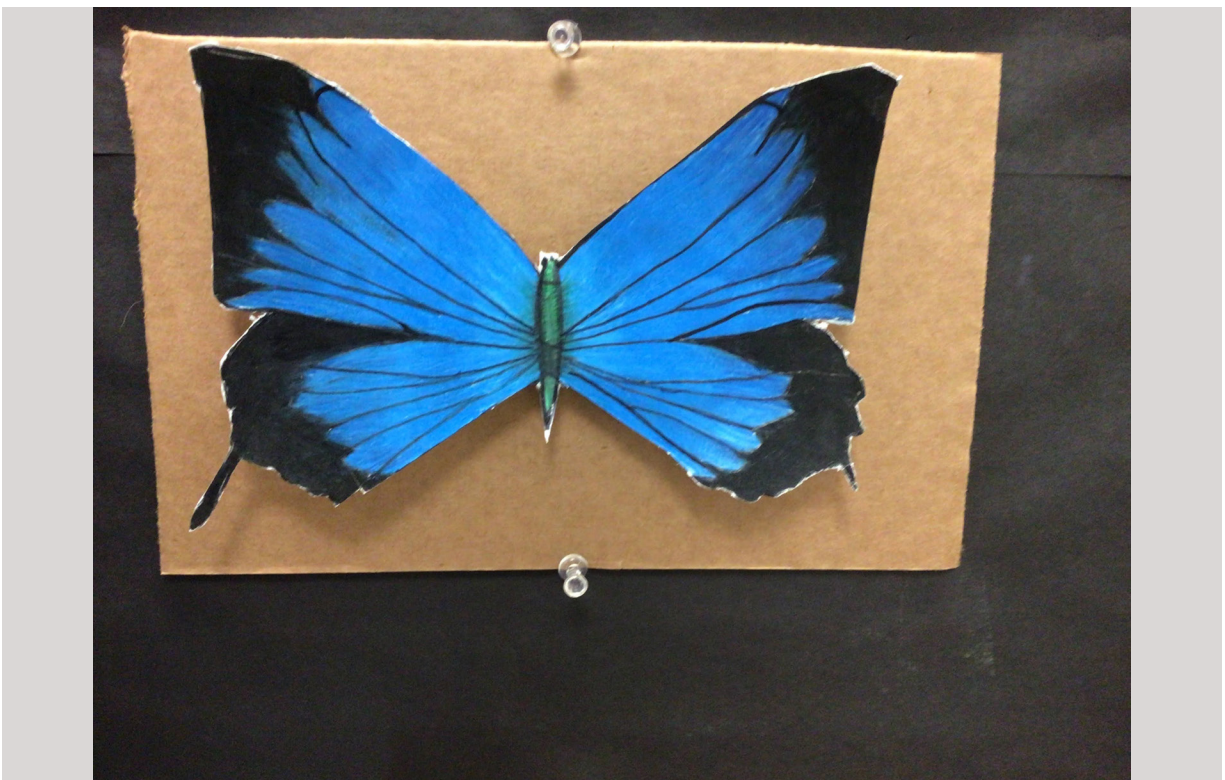
Carter L., 7th grade



Iris M., 6th grade



Jocelyn M., 8th grade



Juniper R., 7th grade





Lila M., 8th grade

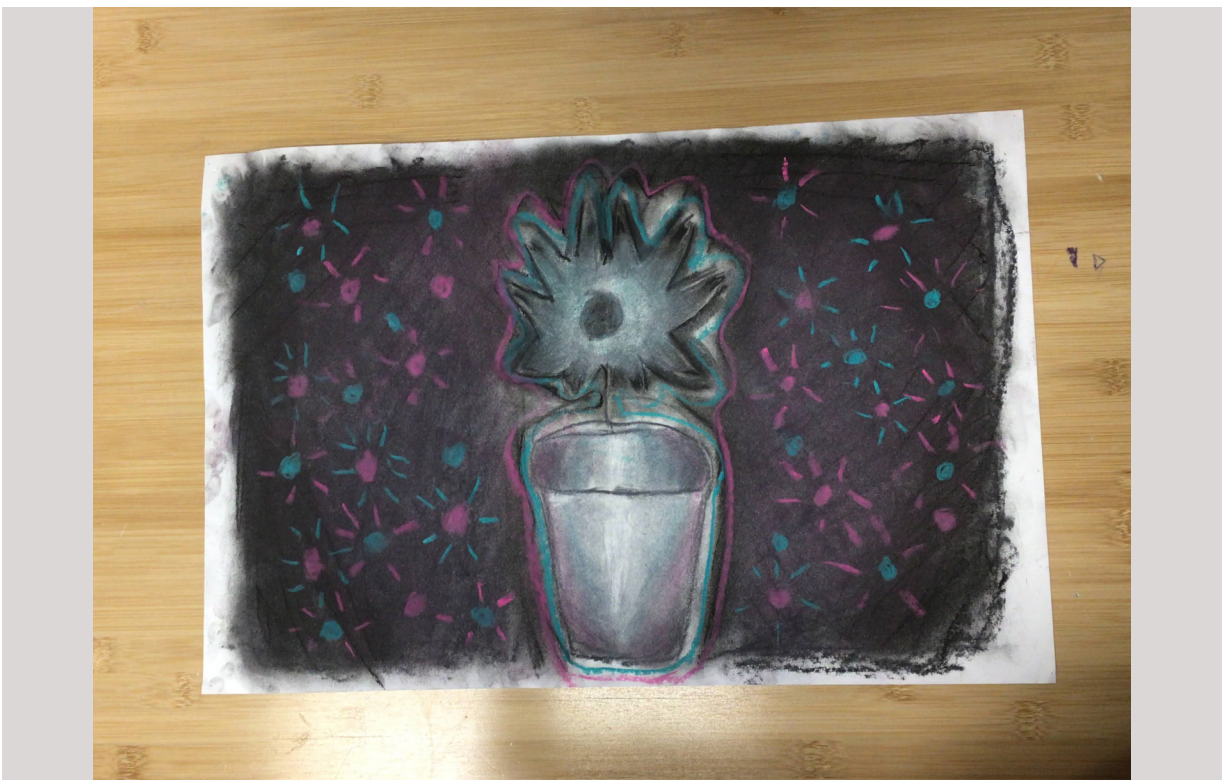


Lila M., 8th grade



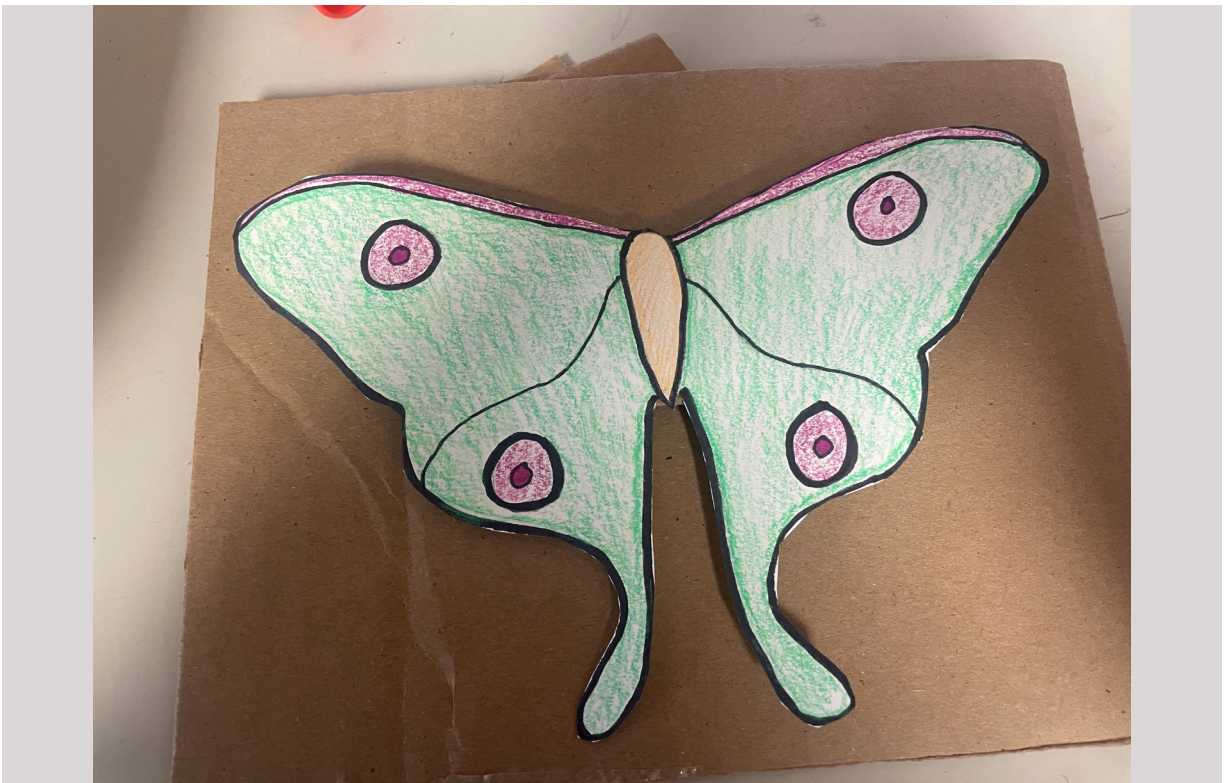


Lillian W., 6th grade

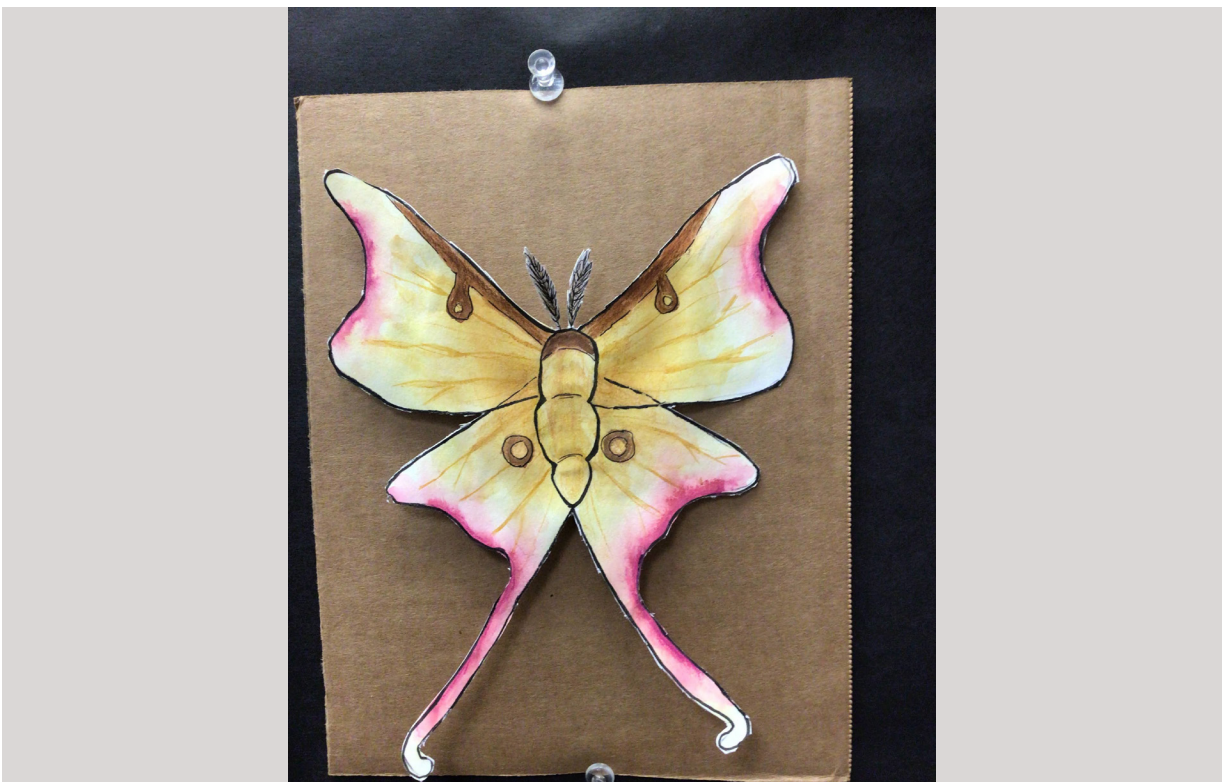


Lucy E., 6th grade





Mackenzie S., 8th grade



Natalie T., 7th grade





Nicholas J., 6th grade

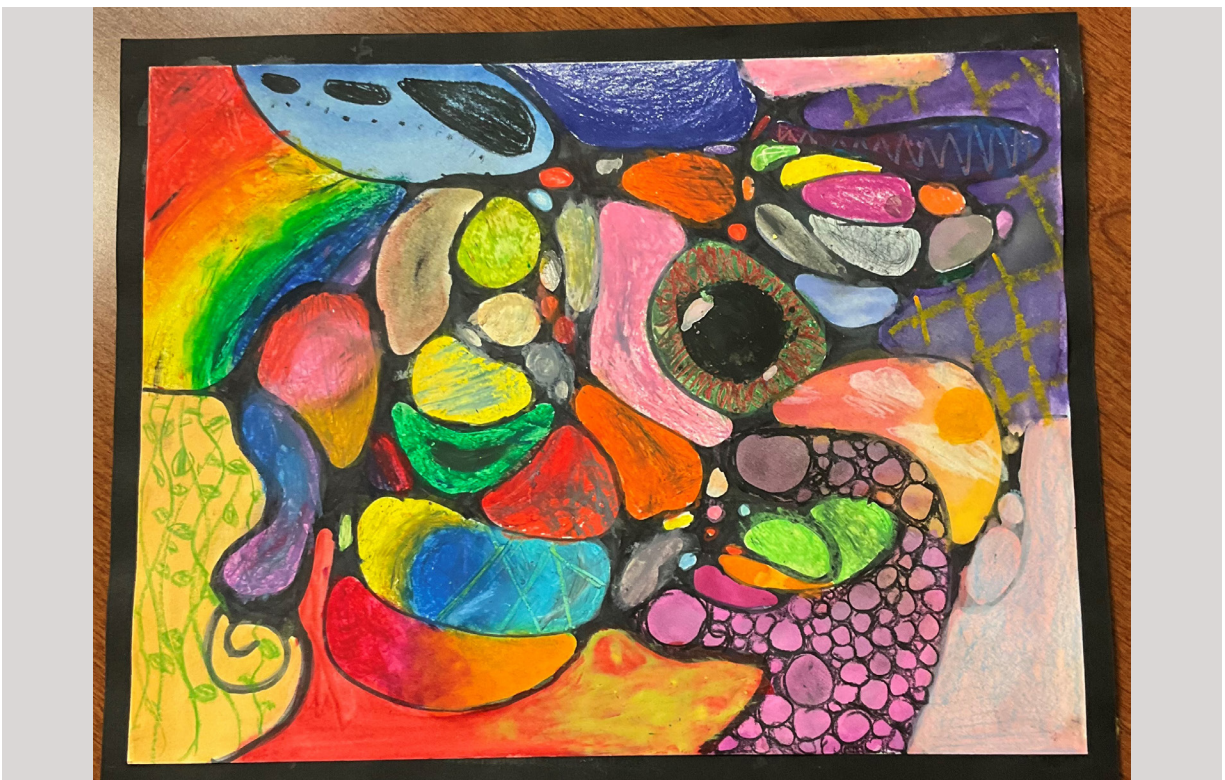


Rylee G., 8th grade





Valentine C., 8th grade



Valentine C., 8th grade





Wilkie D., 8th grade

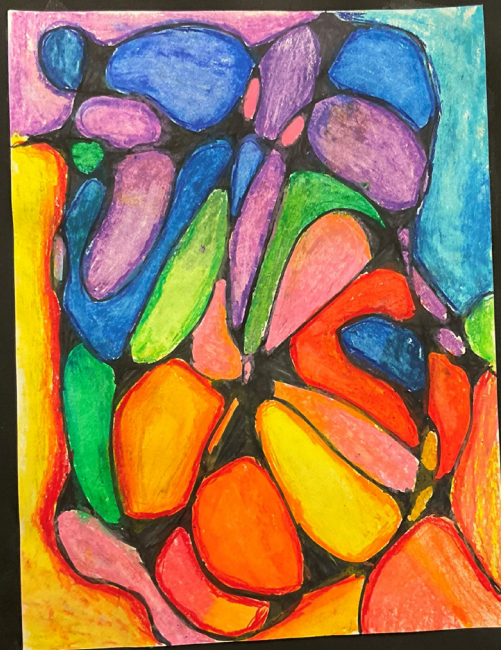


Wilkie D., 8th grade





Aliyah S., 8th grade

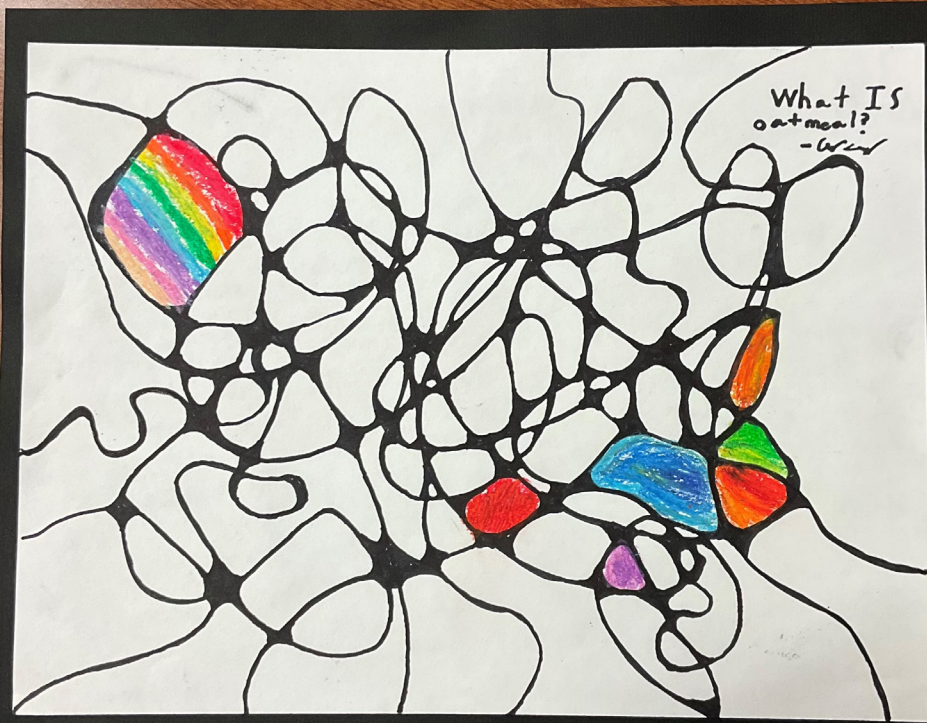


Avery W., 7th grade





Blair T., 8th grade



Carter L., 8th grade





Gwen B R., 8th grade



Jackson W., 7th grade





Konrad H., 7th grade

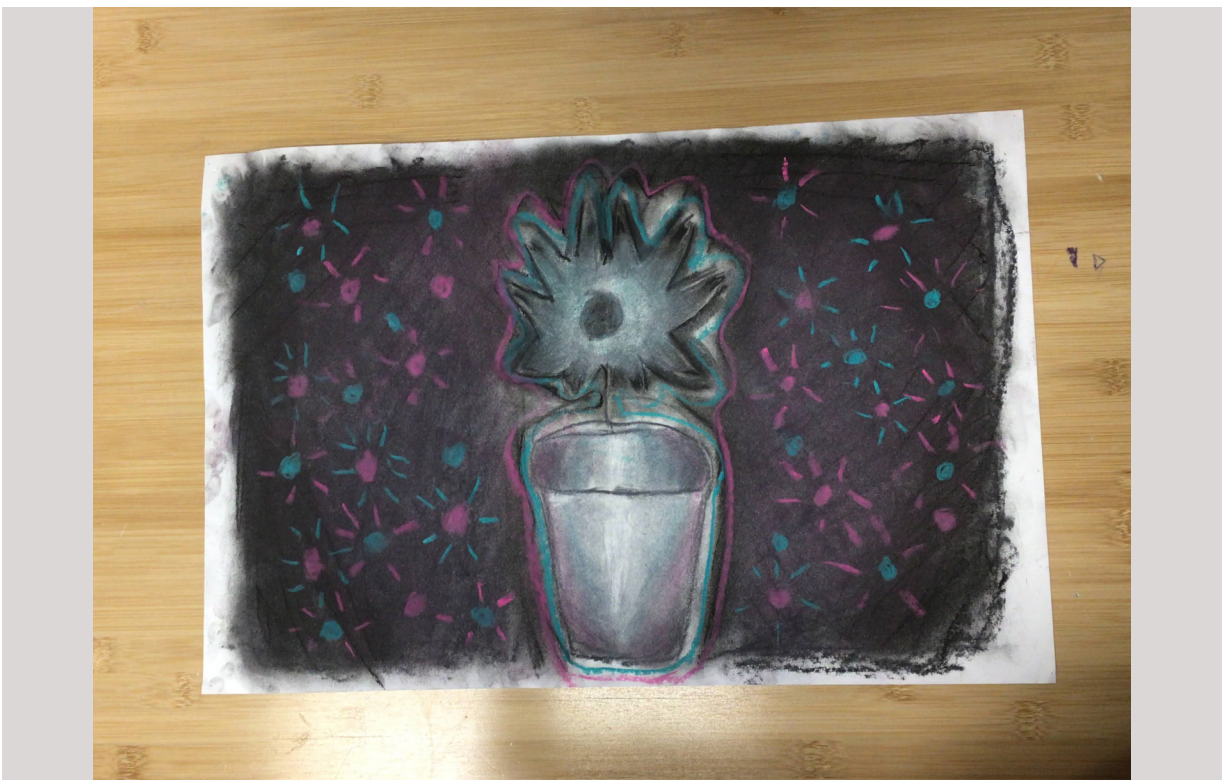


Kristina W., 8th grade





Lucy B., 8th grade



Lucy E., 6th grade



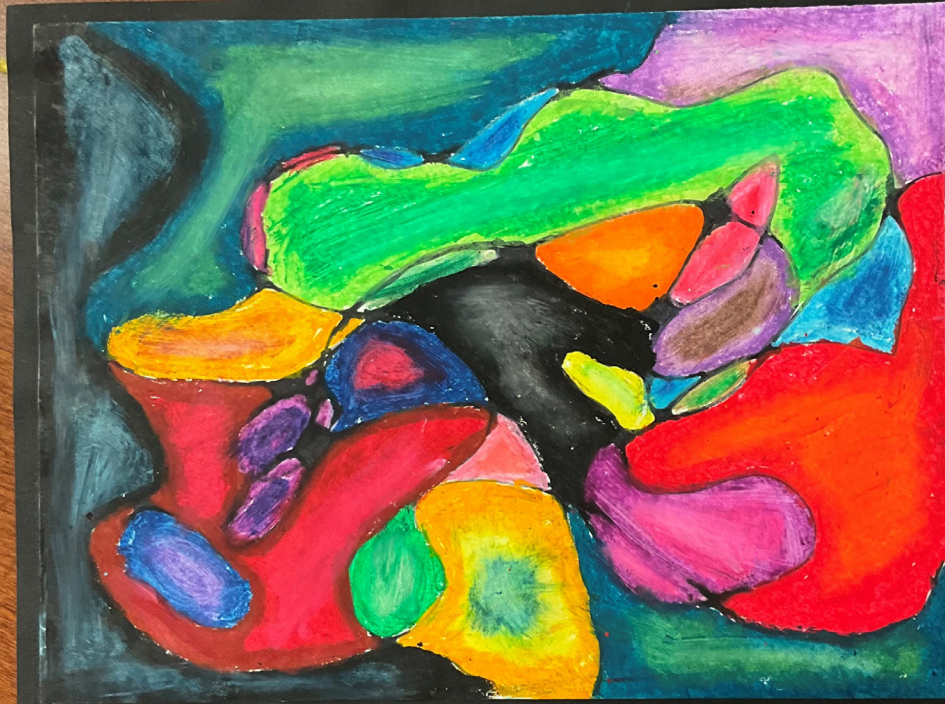


Pasha R., 7th grade



Piper P., 7th grade





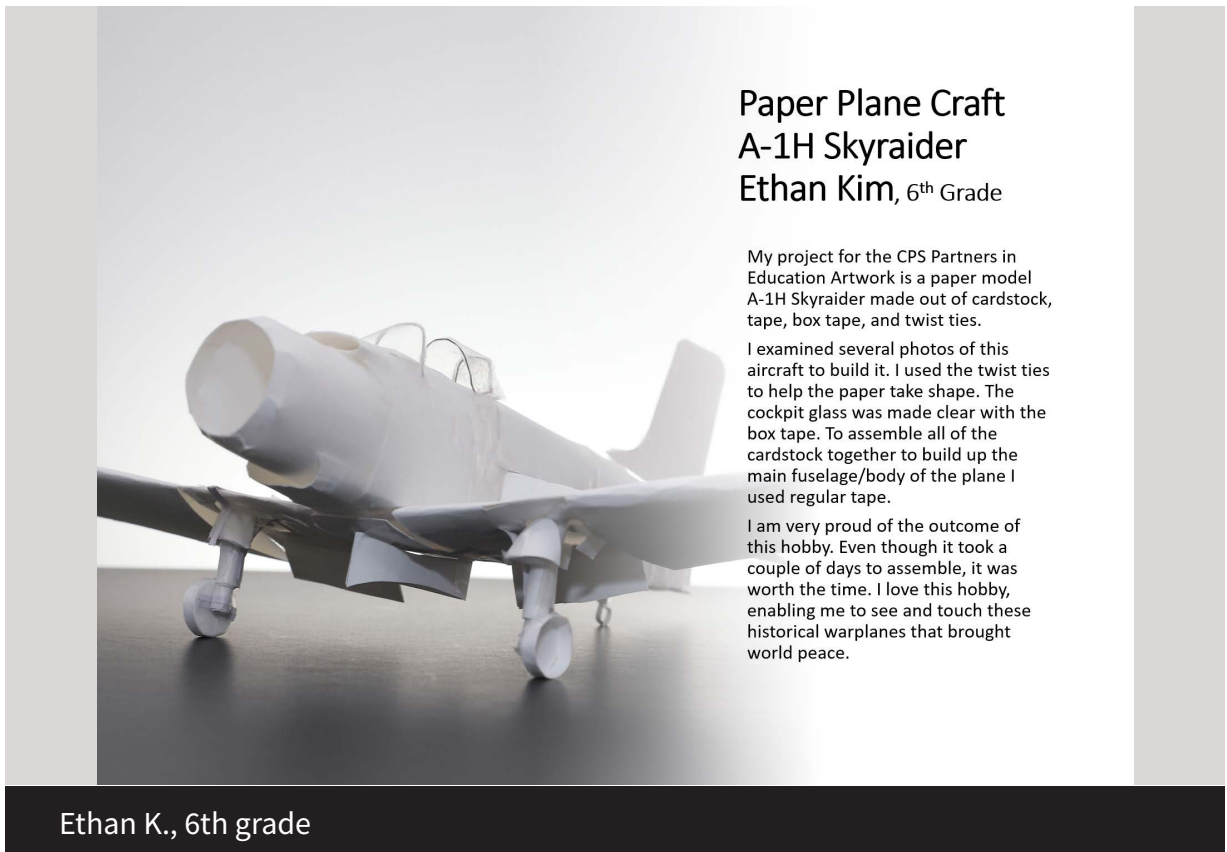
Sophie P., 8th grade



Tessa J., 8th grade



# John Warner Middle School



## Paper Plane Craft A-1H Skyraider Ethan Kim, 6<sup>th</sup> Grade

My project for the CPS Partners in Education Artwork is a paper model A-1H Skyraider made out of cardstock, tape, box tape, and twist ties.

I examined several photos of this aircraft to build it. I used the twist ties to help the paper take shape. The cockpit glass was made clear with the box tape. To assemble all of the cardstock together to build up the main fuselage/body of the plane I used regular tape.

I am very proud of the outcome of this hobby. Even though it took a couple of days to assemble, it was worth the time. I love this hobby, enabling me to see and touch these historical warplanes that brought world peace.

Ethan K., 6th grade





Paper Plane Craft. A-1H Skyraider  
Ethan Kim

Ethan K., 6th grade

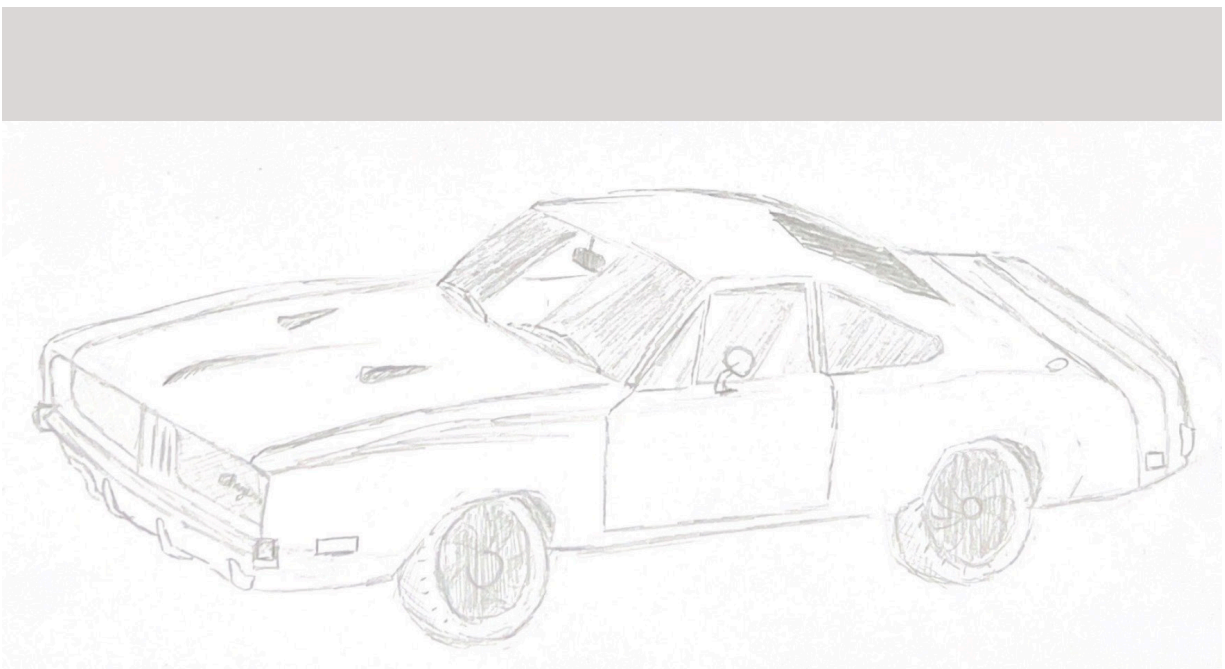


Paper Plane Craft. A-1H Skyraider  
Ethan Kim

Ethan K., 6th grade



Jayden G., 7th grade

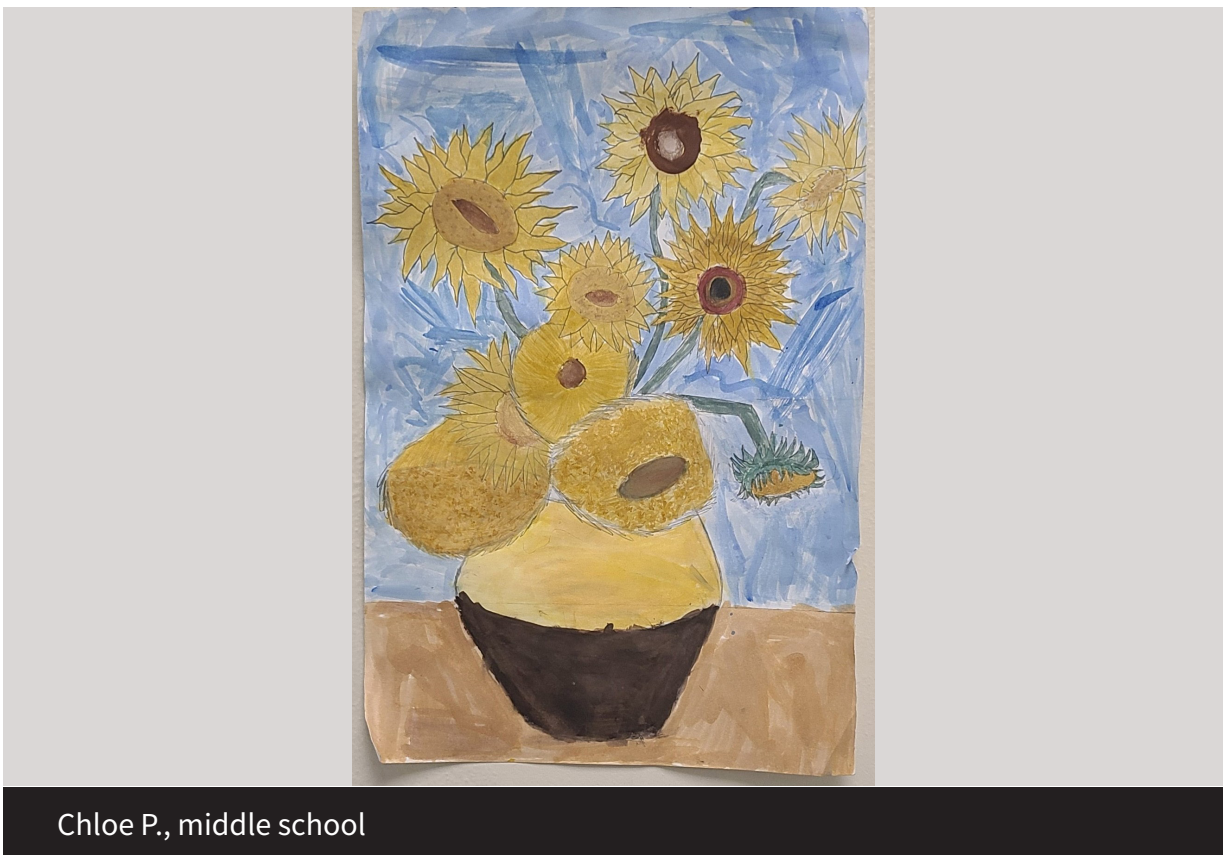


Jayden G., 7th grade





# Oakland Middle School



Chloe P., middle school



Emily M., middle school



Keller, middle school

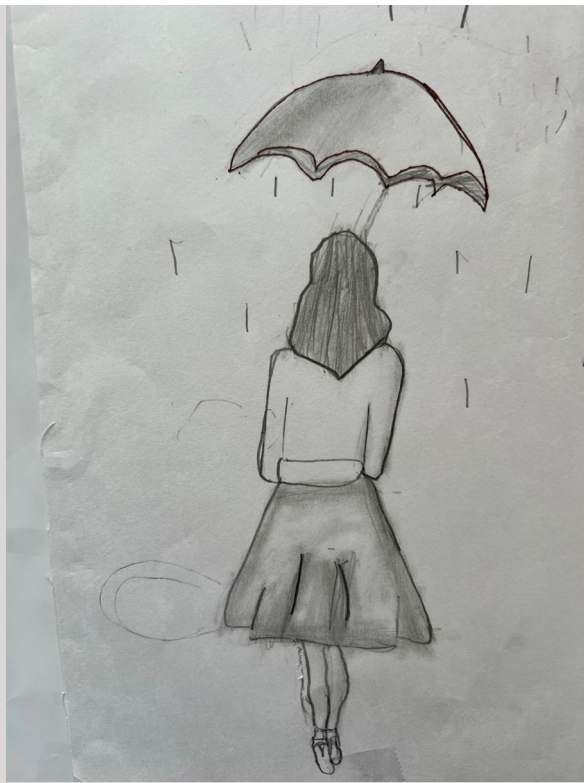




Natalie M., middle school



Natalie M., middle school



Natalie M., middle school

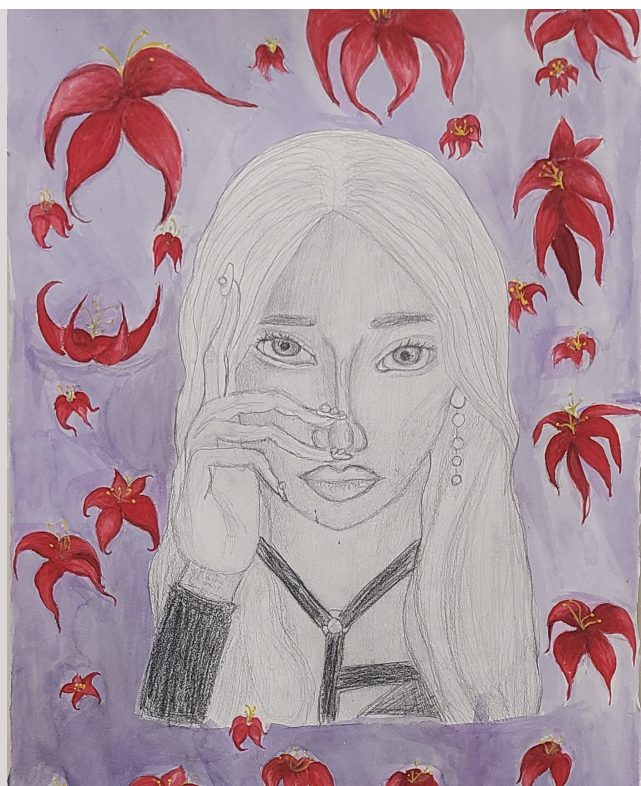


Natalie M., middle school





Natalie M., middle school



Rachana, middle school



Saraku, middle school





# Battle High School

---



Adrianna J., 11th grade

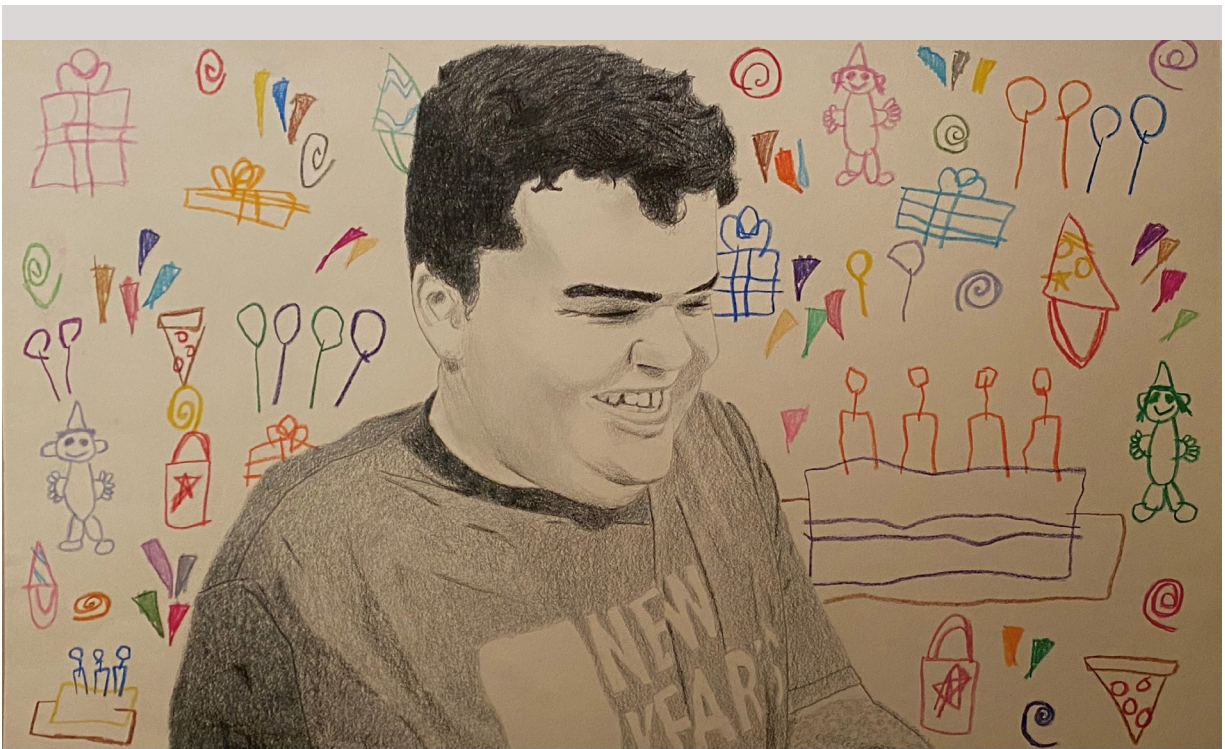


Alaina S., 12th grade



Alexa R., 12th grade





Alexa R., 12th grade



Amani P., 12th grade





Amani P., 12th grade



Amani P., 12th grade

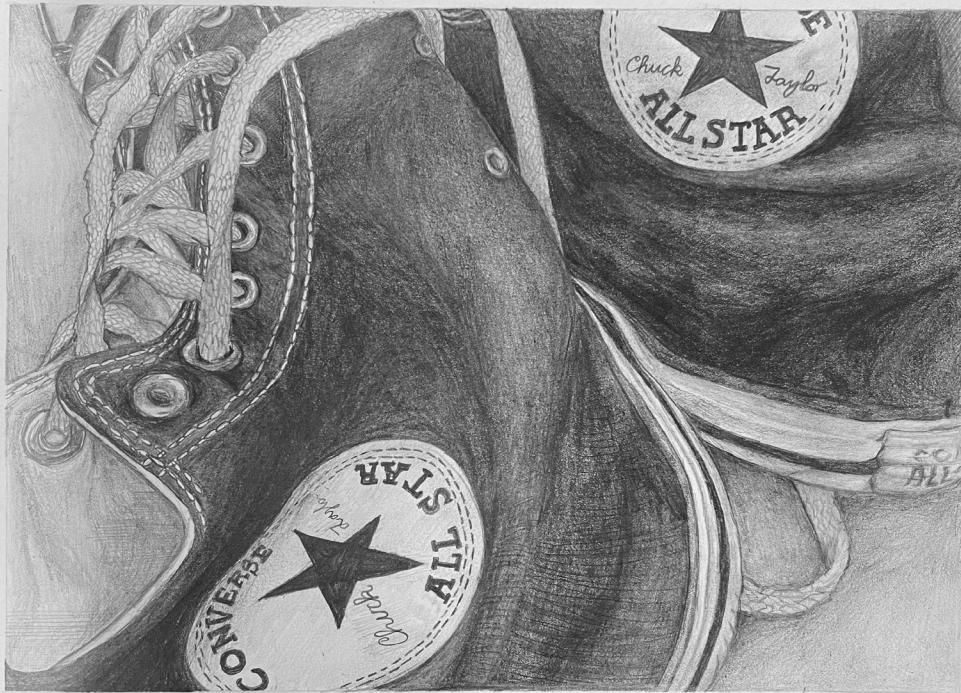




Anna W., 11th grade



Annaliese W., 11th grade



Avery H., 11th grade

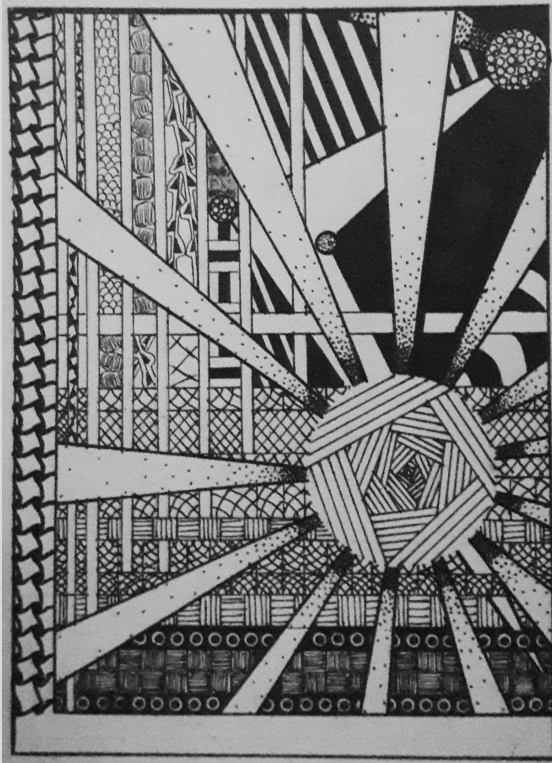


Avery H., 11th grade

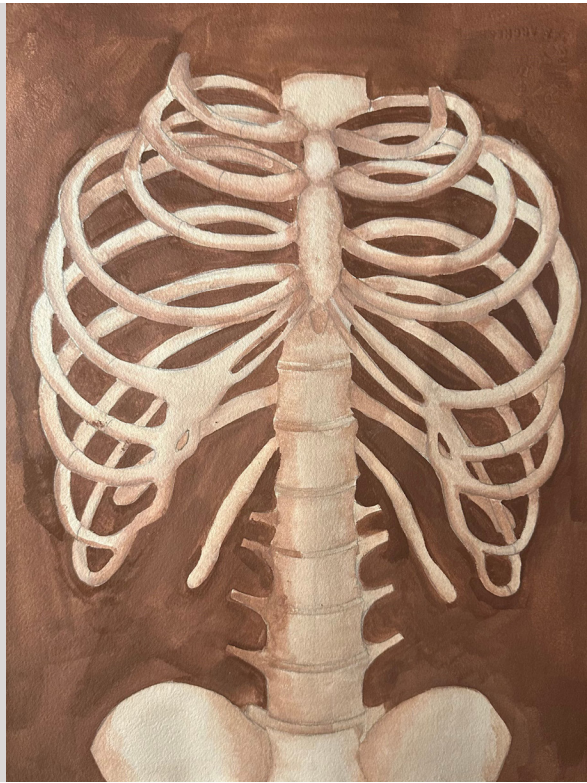




Cameron W., 11th grade



Dani G., 10th grade



Diego S I., 12th grade

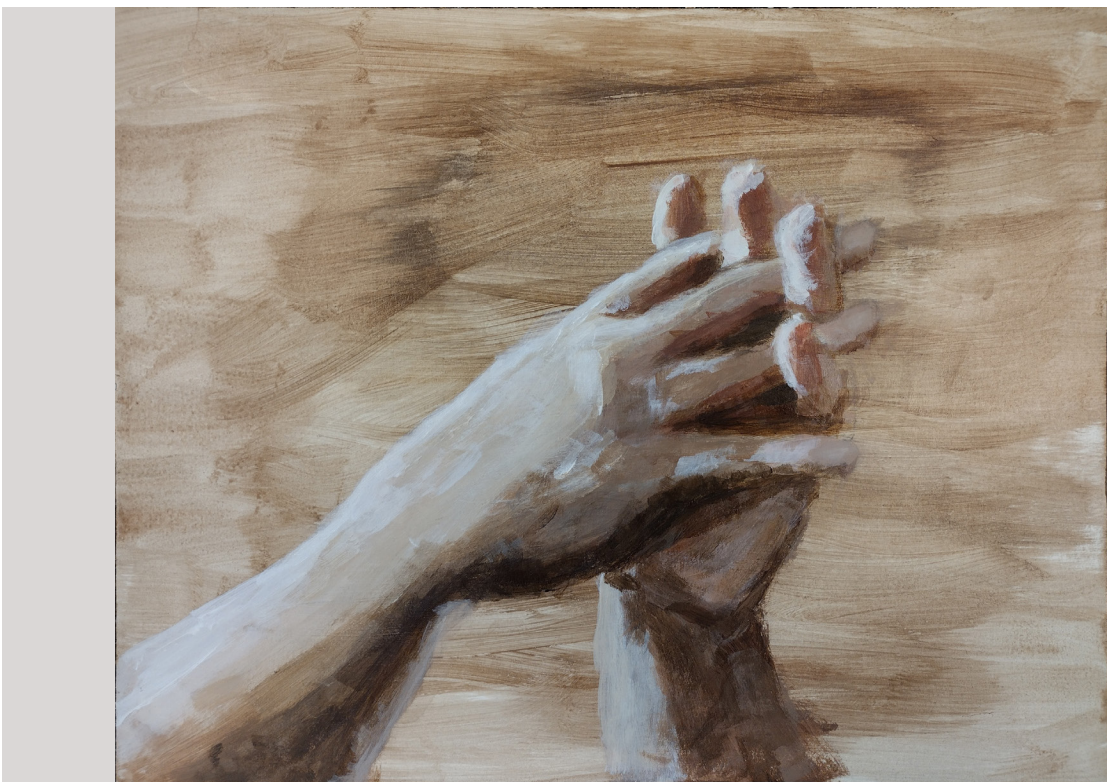


Elissa G., 12th grade





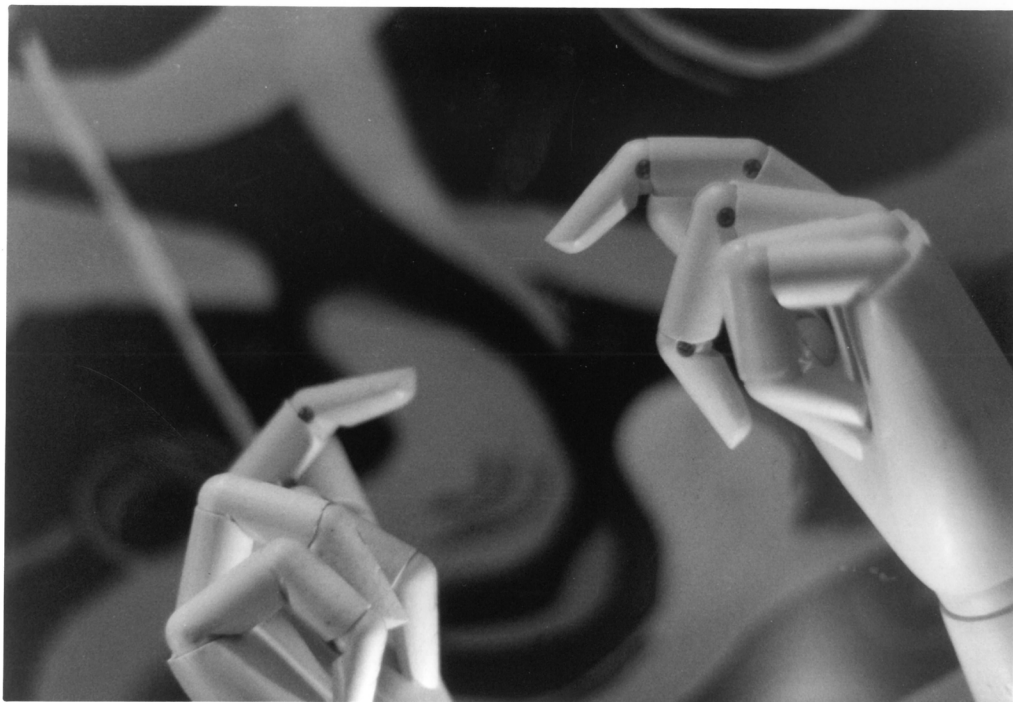
Elissa G., 12th grade



Elissa G., 12th grade



Jenna C., 12th grade



Landon C., 10th grade





Lupe M., 12th grade



Lupe M., 12th grade



Maria J., 11th grade



Mariya E., 9th grade





Maya A., 11th grade



Naomi H., 9th grade



Naomi H., 9th grade



Natalie S., 11th grade





Osmar M., 12th grade



Rhiannon W., 11th grade

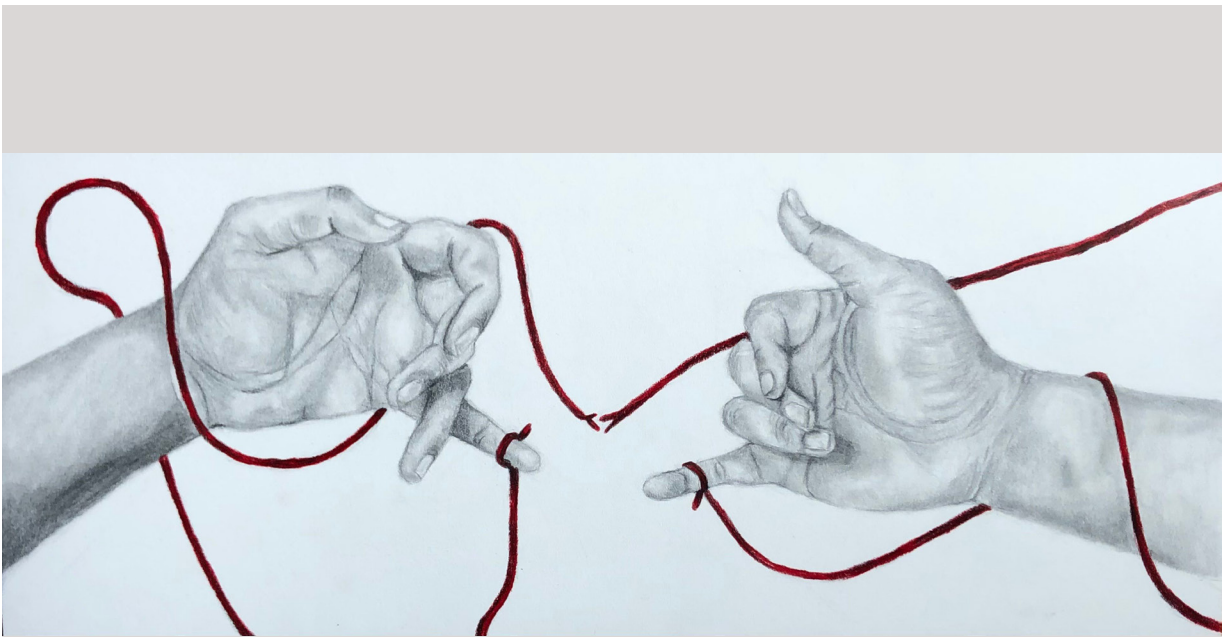


Ryan H., 11th grade



Ryan H., 11th grade





SreyPha P., 12th grade



SreyPha P., 12th grade

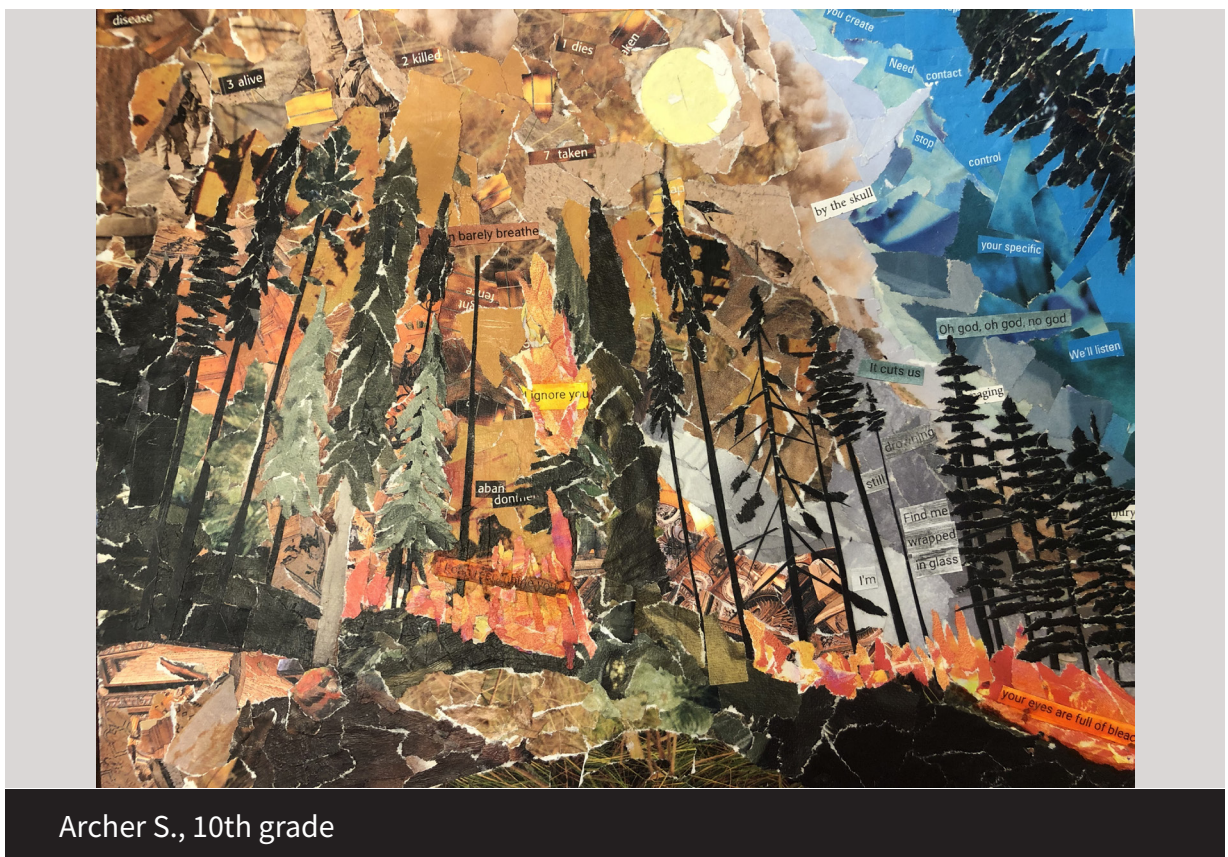


SreyPha P., 12th grade





# Hickman High School



Archer S., 10th grade



Audrey K., 10th grade



C. H., 10th grade





CJ L., 12th grade



Justyce F., 11th grade

**ROCK BRIDGE**



**BRUINS**

# Rock Bridge High School



Brooke N., high school



4/14/23, 8:50 PM

IMG\_9470.heic



<https://drive.google.com/drive/my-drive>

1/1

Sophia L., high school

# Columbia Public Schools

## Partners in Education



### **Alpha Hart Lewis Elementary School**

US Bank

### **Eliot Battle Elementary School**

Fox 22(KQFX)

### **Muriel Williams Battle High School**

Eurofins

Rusk Rehabilitation Hospital

### **Benton STEM Elementary School**

AAUW

Access Arts School of Service

First State Community Bank

Columbia Kiwanis Club

Memorial Baptist Church

Schneider Electric

Walmart (Store #451)

### **Beulah Ralph Elementary School**

Great Southern Bank

### **Blue Ridge Elementary School**

Bradford Research Center

Simmons Bank

Walmart (Store #80)

### **Cedar Ridge Elementary School**

Hy-Vee - Columbia #3

Mediacom

River Region Credit Union

Satin Stitches Sewing and Embroidery

Slim Chickens

### **Center for Early Learning North (CELN)**

Broadway Christian Church

### **Derby Ridge Elementary School**

City of Columbia Fire Department

The Kraft Heinz Company

### **Frederick Douglass High School**

C.A.R.E.

Harry S. Truman Memorial Veterans' Hospital

Job Point

Schnucks Supermarket

Services for Independent Living

The District

### **Fairview Elementary**

Hy-Vee - Columbia #1

KRCG

Target Stores

Veterans United Home Loans

### **Ann Hawkins Gentry Middle School**

Missouri Employers Mutual Insurance Co.

### **Grant Elementary School**

\*Central Bank of Boone County

MU Women's Basketball

### **David H. Hickman High School**

University of Missouri Health Care

\*KOMU 8 & Mid-Missouri's CW

Voluntary Action Center

### **Jefferson Middle School**

\*Boone Hospital Center

Columbia College

Missouri United Methodist Church

### **John B. Lange Middle School**

Bass Pro Shops

The Crossing

### **John Warner Middle School**

USA Mortgage

### **Locust Street Expressive Arts Elementary School**

Columbia Art League

Columbia Civic Orchestra

MU Museum of Anthropology

MU Museum of Art & Archaeology

MU Human Environmental Sciences

MU Art Education

MU School of Music

MU Theatre Department

My Secret Garden

PW Architects

Ragtag Film Society

State Historical Society of Missouri

Stephens College

U.S. Fish & Wildlife Service

Walmart Supercenter (Store #159)

### **Midway Heights Elementary School**

D&H Drugstore

Midway Electric

### **Mill Creek Elementary School**

ABC 17/KMIZ/Fox 22 (KQFX)

Columbia Insurance Group

Hawthorn Bank

Rolling Hills Veterinary Hospital

### **New Haven Elementary School**

Columbia Environmental Research Center

Hy-Vee - Columbia #2

Jefferson Farm & Garden

Lenoir Woods

Tigers Community Credit Union

TRYPS

### **Oakland Middle School**

AssuredPartners

Zimmer Radio Group

### **Parkade Elementary School**

\*Commerce Bank, N.A.

Parkade Baptist Church

Pepsi Beverages Company



**Mary Paxton Keeley Elementary School**

Barnes & Noble, Inc.  
Hy-Vee - Columbia #1

**Ridgeway Elementary School**

Ameren Missouri  
Barnes Healthcare  
Columbia Strength and Conditioning

**Rock Bridge Elementary School**

Hy-Vee - Columbia #2  
Meals on Wheels  
Missouri Credit Union  
Missouri Department of Conservation  
Resource Science Center

**Rock Bridge High School**

KMOU8 & Mid-Missouri's CW  
\*State Farm Insurance Companies

**Russell Boulevard Elementary School**

Gerbes Supermarket  
Kappa Alpha Theta Sorority  
The Callaway Bank

**Shepard Boulevard Elementary School**

3M  
Hy-Vee - Columbia #3

**Smithton Middle School**

MU Volleyball  
Quaker Oats

**Two Mile Prairie Elementary School**

Elks Lodge  
EquipmentShare

**West Boulevard Elementary School**

Forum Christian Church

**West Middle School**

\*Shelter Insurance Companies

**Columbia Area Career Center**

Big O Tires  
\*MFA Inc.  
MU Operations

**Columbia Public Schools K-12**

Big Brothers Big Sisters of Central Missouri  
Boys and Girls Club of the Columbia Area  
City of Columbia  
City of Columbia, Human Rights  
Commission/Law Department  
City of Columbia, Office of Neighborhood  
Services  
City of Columbia Police Department  
City of Columbia Public Works  
City of Columbia Water & Light  
Columbia College  
Columbia Mall  
Heart of Missouri United Way  
Junior Achievement  
Mizzou Athletics  
MU College of Education  
MU Department of Educational, School and  
Counseling Psychology  
The Food Bank of Central & Northeast  
Missouri  
Visionworks Marketing Group

**CPS Athletics**

City of Columbia Parks & Recreation  
Department  
Columbia Orthopedic Group  
KOMU 8 & Mid-Missouri's CW  
Peak Performance

**CPS Fine Arts**

City of Columbia, Office of Cultural Affairs  
"We Always Swing"® Jazz Series  
Missouri Symphony Society  
MU Concert Series  
Chorale Arts Alliance of Missouri

**CPS Center for Gifted Education**

The Bank of Missouri

**CPS Family and Consumer Sciences**

Holiday Inn Executive Center

**CPS Health Services**

Columbia/Boone County Health  
Department

**CPS MAC Scholars**

Focus on Learning  
Minority Men's Network  
MU College of Agriculture  
Shelter Insurance Companies

**CPS Parents as Teachers**

Daniel Boone Regional Library

**CPS Physical Education & Health**

City of Columbia Parks & Recreation  
Department  
Local Motion

**CPS Preschool Program**

Columbia Metro Rotary

**Quest Program**

LaCrosse Lumber Company

**CPS Science**

City of Columbia, Office of Sustainability  
Columbia Audubon Society  
Missouri River Relief  
MU College of Veterinary Medicine

**CPS Social Studies**

Boone County Bar Association

**CPS Transportation**

Student Transportation of America

\*Denotes Charter Partner

# Columbia Public Schools

## Partnership Friends



### Columbia Public Schools

Andy's Frozen Custard  
 Applebee's Restaurant  
 Assistance League of Mid-Missouri  
 Best Buy  
 Bob Evans Restaurant  
 Bonkers  
 Boone County Lumber Company  
 Boy Scouts of America, Great Rivers  
 Brad Gaines Advertising & Promotional Products  
 Buffalo Wild Wings  
 Central Missouri Community Action  
 Chick-fil-A  
 Chili's  
 Columbia Center for Urban Agriculture (CCUA)  
 COMO Companies  
 Columbia Kiwanis Club  
 Columbia Public Schools Foundation  
 Culver's  
 Domino's Pizza  
 Downtown Optimist Club  
 Farmer's Insurance  
 Fazoli's  
 FedEx Kinko's  
 Freddy's Frozen Custard & Steakburgers  
 Goodrich Forum 8 Theaters  
 Hardee's  
 Heartland Coca-Cola Bottling Company  
 Hot Box Cookies  
 H&R Block  
 Image 360  
 Italian Village  
 Jersey Mike's Subs  
 Jimmy John's  
 KBIA FM  
 Kids First Optimist Club  
 League of Women's Voters  
 Lee's Famous Recipe Chicken

LongHorn Steakhouse  
 Mathnasium  
 McDonald's of Columbia  
 MU Sports Marketing Department  
 MU Women's Gymnastics  
 Noodles & Company  
 Olive Garden  
 Papa John's Pizza  
 Pizza Hut's of Columbia  
 Plato's Closet  
 Regal Columbia Theatres  
 Salvation Army  
 Sam's Club  
 Shakespeare's Pizza  
 Show-Me-State Games  
 Sonic  
 Stadium Grill  
 Stoney Creek Inn  
 Subway  
 Taco Bell  
 Texas Roadhouse  
 TGI Fridays  
 The Broadway Columbia  
 Tiger Family Chiropractic & Wellness Center  
 True North  
 Your Pie  
 Zaxby's

### Alpha Hart Elementary

Columbia United Church of Christ (CUCC)

### Benton STEM Elementary School

First Presbyterian Church  
 Schneider Electric

### CPS Athletics

Johnston Paint and Decorating  
 Little Dixie Construction Company  
 MFA Oil Co.  
 Red Weir Athletic Supplies

### CPS Facilities and Construction Services

Columbia Landcare

### CPS Physical Education

American Heart Association

### CPS Science

Boone Electric Cooperative

### CPS Physical Education

American Heart Association

### David H. Hickman High School

Sunrise Optimist Club

### Derby Ridge Elementary School

Grace Bible Church

### Locust Street Expressive Arts Elementary School

Boonslick Kiwanis  
 KOPN  
 Sparky's  
 The District

### Midway Heights Elementary

Boone County Fire Protection District  
 Midway Optimist

### Rock Bridge High School

TRYPS

### Shepherd Boulevard Elementary School

Noah's Ark Animal Hospital  
 Rainbow House